
GROUP 5

**SYNTHETIC-RESIN
PARTS**

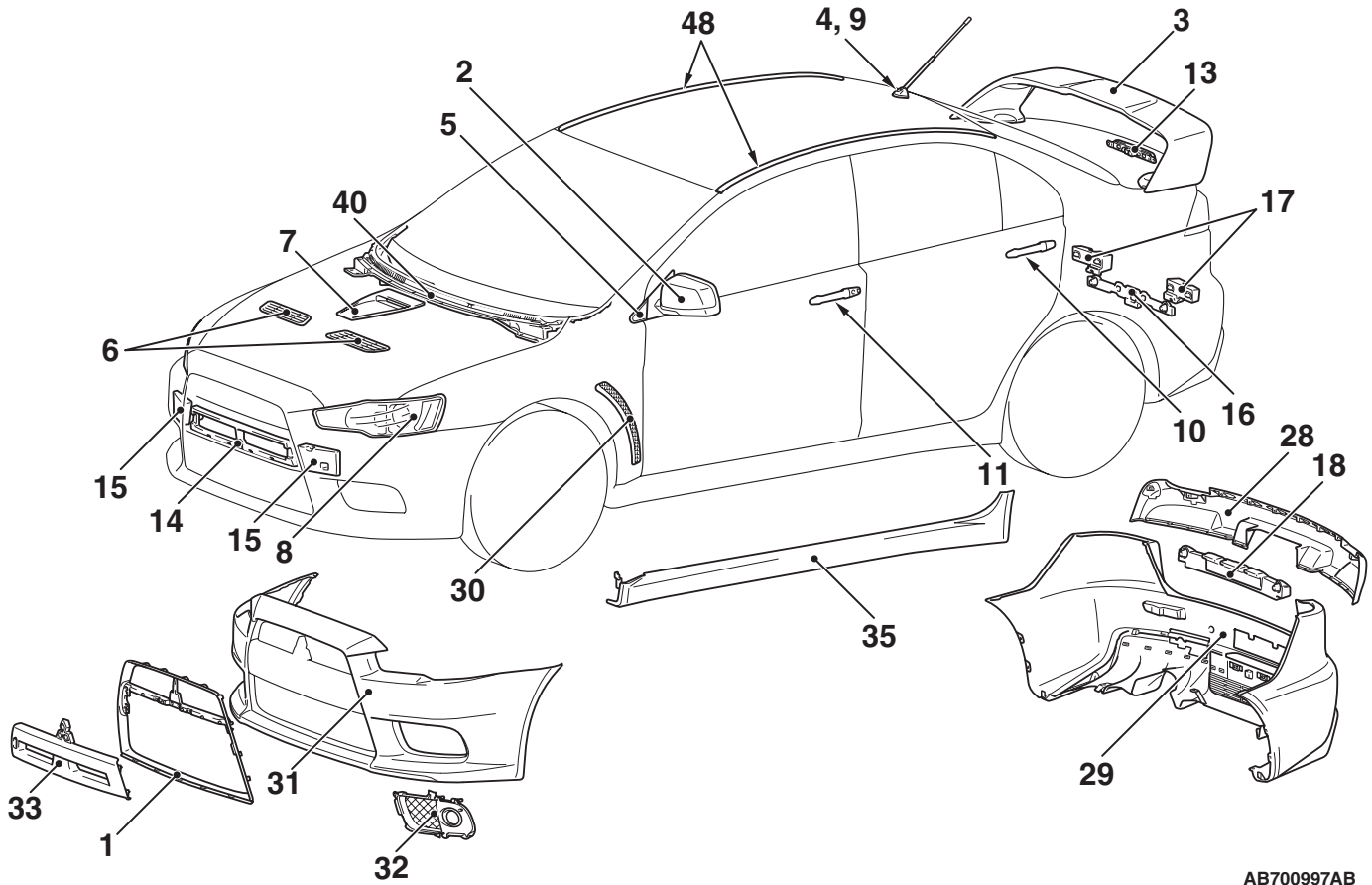
CONTENTS

LOCATION OF SYNTHETIC-RESIN PARTS	5-2
--	------------

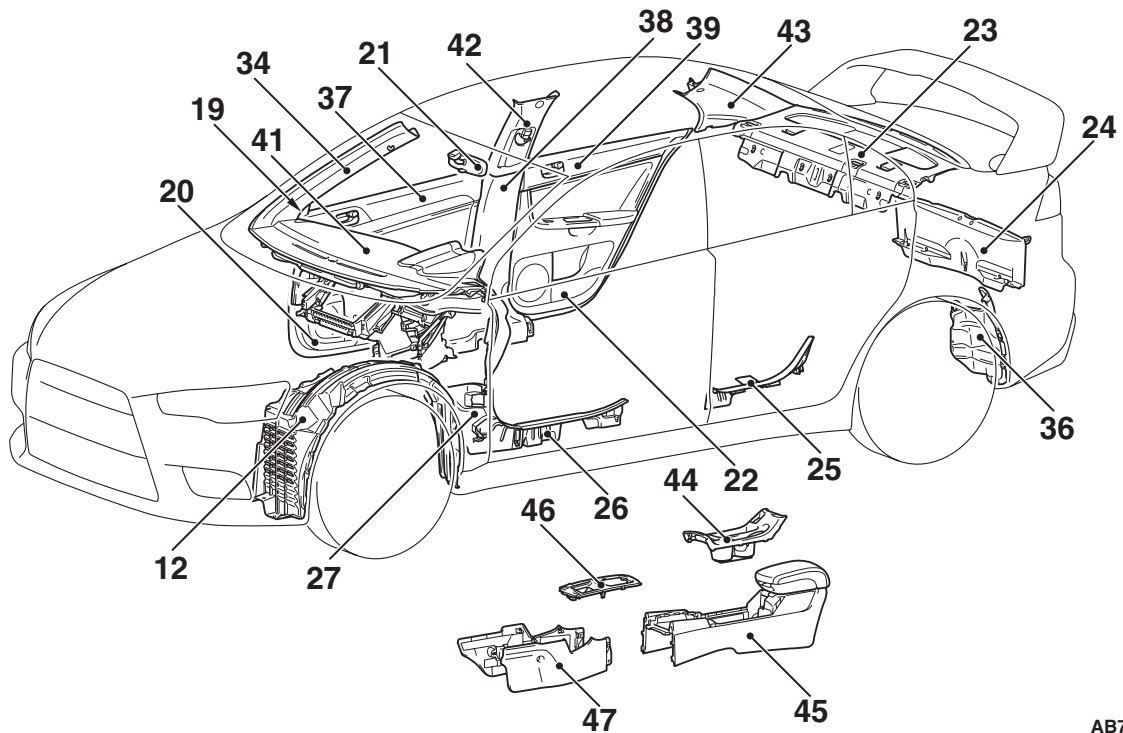
LOCATION OF SYNTHETIC-RESIN PARTS

M4050001001433

The location and material of each of the principal synthetic-resin parts are shown below.



AB700997AB



AB700998AB

**SYNTHETIC-RESIN PARTS
LOCATION OF SYNTHETIC-RESIN PARTS**

No.	Part name	Name of resin	Abbreviation	Heat-resistant temp [°C (°F)]
1	Radiator grille	Acrylonitrile butadiene styrene	ABS	80 (176)
2	Door mirror			
3	Rear spoiler			
4	Antenna base <Vehicles without satellite radio tuner>	Acrylonitrile ethylene styrene	AES	80 (176)
5	Front delta garnish	Acrylonitrile styrene acrylate	ASA (AAS)	80 (176)
6	Hood air outlet garnish	Talc (35%) +Glass fiber (5%) filled Polyamide 6	PA6-[TD35+GF5]	80 (176)
7	Hood air inlet garnish			
8	Headlight	Polycarbonate	PC	120 (248)
9	Antenna base <Vehicles with satellite radio tuner>	Polycarbonate	PC+AES	80 (176)
10	Rear door outside handle	Polycarbonate+Polyethylene terephthalate	PC+PET	120 (248)
11	Front door outside handle			
12	Front splash shield	Low density Polyethylene	PE-LD (LLDPE)	80 (176)
13	High-mounted stoplight	Polymethyl methacrylate	PMMA	80 (176)
14	Front bumper air guide center duct	Polypropylene	PP	80 (176)
15	Front bumper core			
16	Rear bumper core lower			
17	Rear bumper core upper <Vehicles for Canada>			
18	Rear bumper core center <Vehicles for Canada>			
19	Front door sash trim			
20	Front door trim lower			
21	Inside rear view mirror			
22	Rear door trim lower			
23	Rear shelf trim			
24	Rear end trim			
25	Rear scuff plate			
26	Front scuff plate			
27	Cowl side trim			
28	Rear bumper protector <Vehicles for Canada>	Rubber denatured polypropylene	PP+E/P	80 (176)
29	Rear bumper face			
30	Front fender garnish			
31	Front bumper face			
32	Front bumper garnish			
33	Grille center garnish			

**SYNTHETIC-RESIN PARTS
LOCATION OF SYNTHETIC-RESIN PARTS**

No.	Part name	Name of resin	Abbreviation	Heat-resistant temp [°C (°F)]
34	Front pillar trim	Talc filled rubber modified polypropylene (15%)	PP+E/P-TD15	80 (176)
35	Side air dam	Talc filled rubber modified polypropylene (20%)	PP+E/P-TD20	110 (230)
36	Rear wheel splash shield rear	Talc filled polypropylene	PP-TD (PPF)	100 (212)
37	Front door trim upper	Talc filled polypropylene (10%)	PP-TD10 (PPF)	110 – 120 (230 – 248)
38	Center pillar trim lower			
39	Rear door trim upper			
40	Front deck garnish	Talc filled polypropylene (20%)	PP-TD20 (PPF)	120 – 130 (248 – 266)
41	Instrument panel			
42	Center pillar trim upper			
43	Rear pillar trim			
44	Floor console box cup holder			
45	Floor console rear			
46	Floor console panel			
47	Floor console side cover			
48	Roof drip molding	Polyvinyl chloride	PVC	80 (176)

NOTE:

- If the material symbols designated by the ISO differ from the old symbols, both are given, with the old symboling enclosed in brackets.
ISO: International Standardization Organization.
- A plus sign (+) indicates that the two different materials mix each other.
- The material symbols for synthetic-resin parts are embossed on the parts in hidden places.