
GROUP 13B

FUEL SUPPLY

CONTENTS

GENERAL INFORMATION 13B-2 FUEL TANK 13B-3

GENERAL INFORMATION

M2134000101074

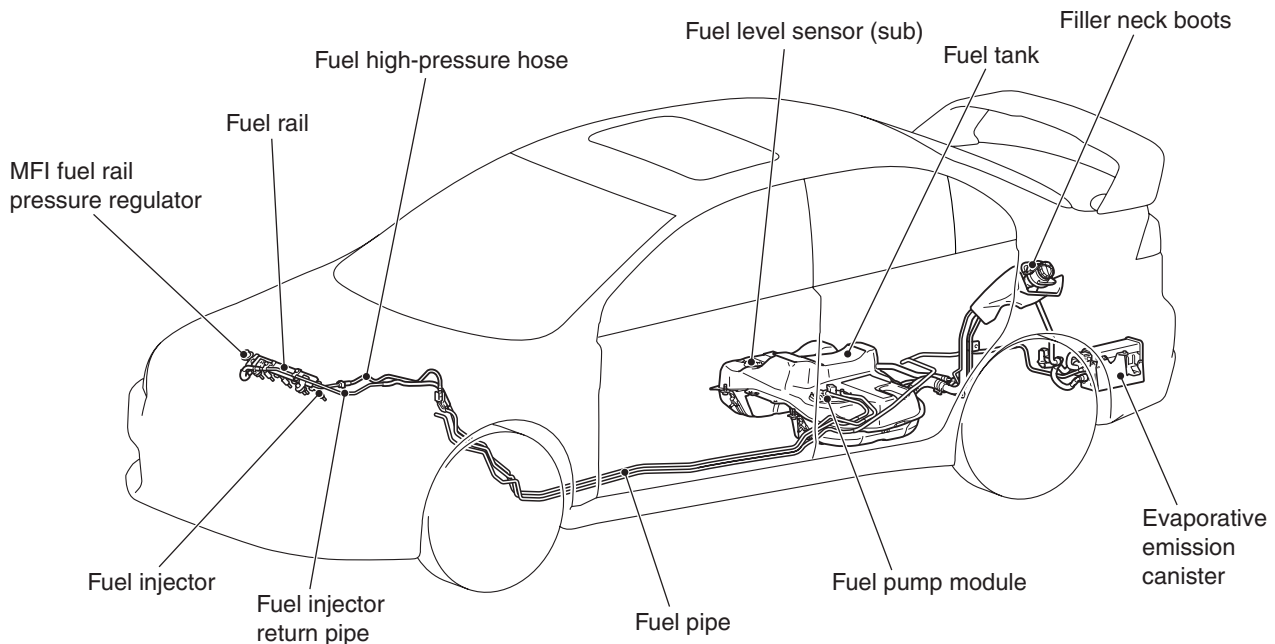
The fuel system consists of the following components:

- Fuel rail
- MFI fuel rail pressure regulator
- Fuel injector
- Fuel tank assembly
- Fuel pump module
- Fuel level sensor (sub)
- Evaporative emission canister

SPECIFICATIONS

Item	Specification	
Fuel tank capacity dm ³ (gal)	55 (14.5)	
Fuel pump type	Electric	
Fuel filter type	Cartridge (incorporates fuel pump module)	
Fuel pump pressure regulator pressure kPa (psi)	329 (47.7)	
Fuel injector	Type	Electro-magnetic
	Quantity	4
Evaporative emission control system	Canister	

CONSTRUCTION DIAGRAM



AC709107AB

This fuel system is designed with consideration for global environment protection to ensure safety at a collision, reduce weight, and improve reliability and quality. The system has the following features.

- A quick-joint connector of a plastic tube is used for the fuel high-pressure hoses in the engine compartment to reduce the permeation of fuel evaporative emission.
- The surface of underfloor fuel pipes is coated with 1-mm thickness of plastic to improve resistance to corrosion and chipping.
- The rubber boot is employed for the filler port mounting part of fuel filler neck to protect fuel filler neck in case of collision.

FUEL TANK

M2134001001070

The fuel tank assembly consists of the fuel pump module, fuel level sensor, fuel tank, and others, and offers the following features.

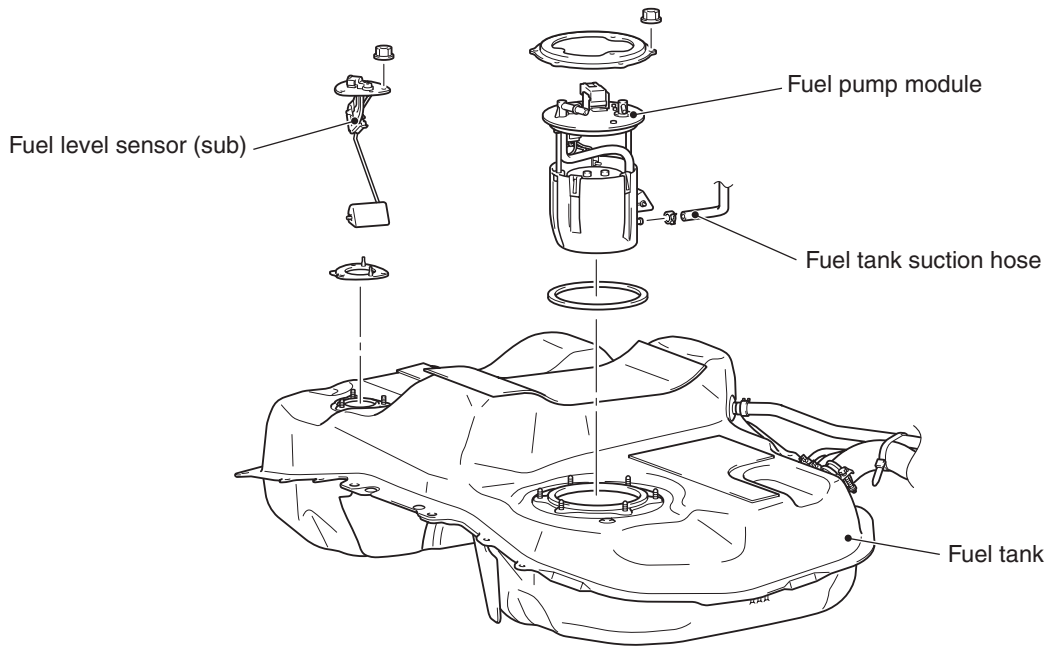
- The fuel tank is placed under the rear seat floor to improve the safety upon impact.
- For the fuel tank, pre-coat alloy molten zinc steel plate is adopted to the tank main body, which does not contain tin alloy.
- The fuel tank safety valve is integrated in the fuel tank which prevents fuel leaks when the vehicle has leaned or rolled over, and a number of openings and pipe joints on the fuel tank upper surface has been reduced.

- A built-in fuel filter and fuel tank suction hose have been adopted to offer support to the saddle-type fuel tank.

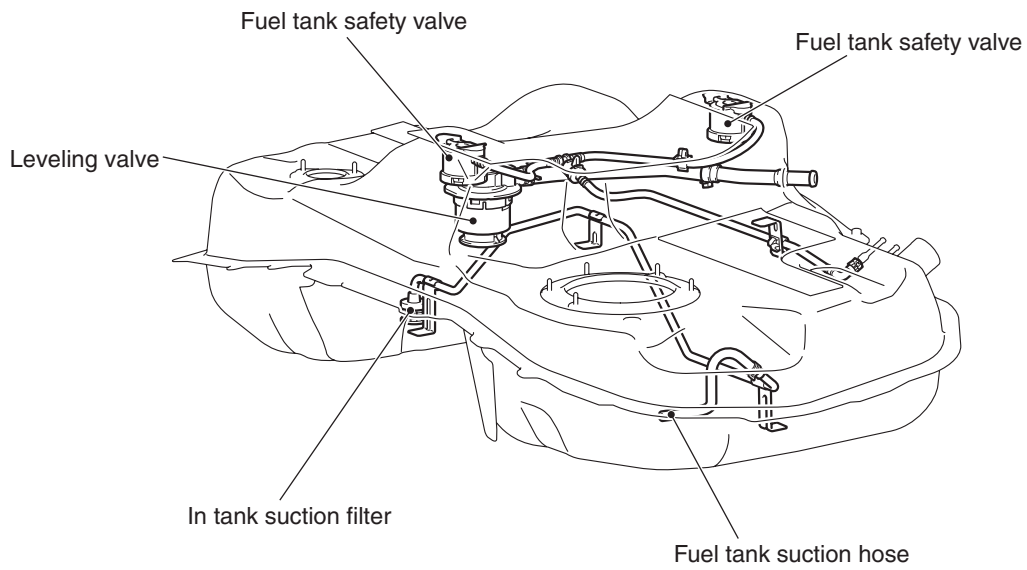
The fuel pump module consists of the following components:

- Fuel pump assembly
- Fuel gauge unit
- Fuel filter
- Fuel tank differential pressure sensor

CONSTRUCTION DIAGRAM



AC709133AB



AC709134AB