
GROUP 80B**SPLICE LOCATIONS****CONTENTS**

HOW TO READ SPLICE LOCATIONS.....	80B-2	DASH PANEL.....	80B-5
INDEX.....	80B-3	STEERING COLUMN.....	80B-5
ENGINE COMPARTMENT.....	80B-4	FLOOR AND ROOF.....	80B-6
ENGINE AND TRANSAXLE.....	80B-4	LUGGAGE COMPARTMENT.....	80B-6

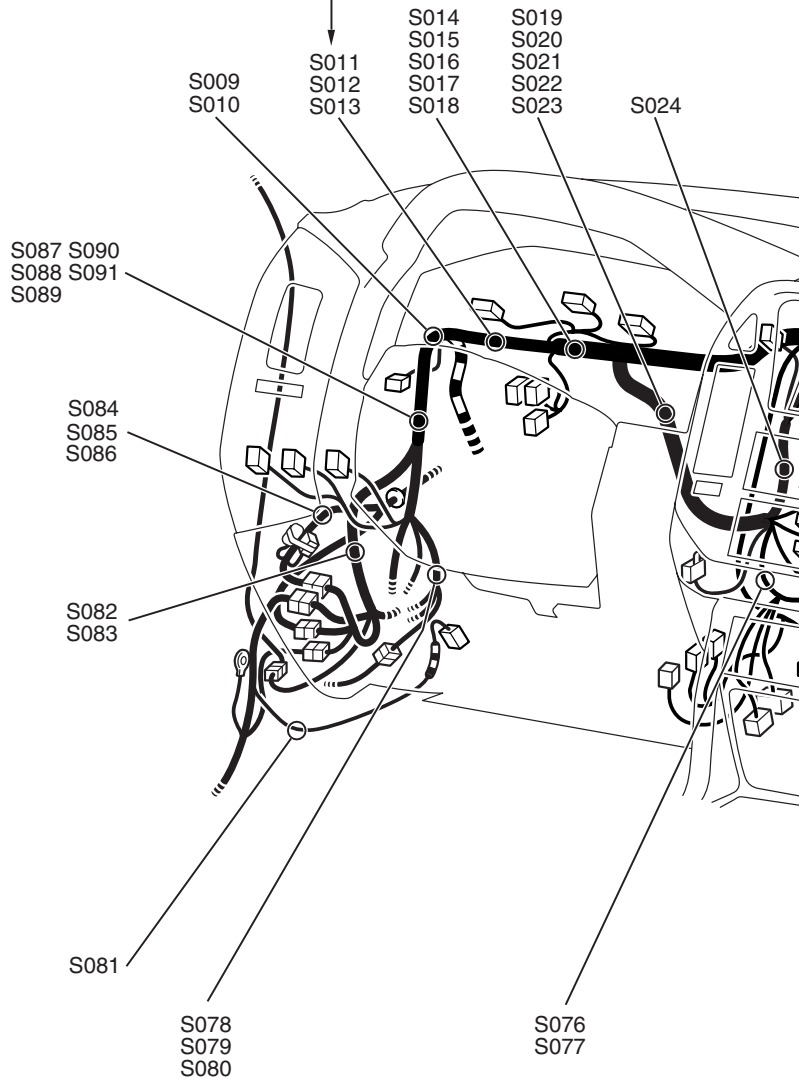
HOW TO READ SPLICE LOCATIONS

"Splice locations" describes splice points of each wiring harness on an actual vehicle. Some variations are included in one splice location. Accordingly, some locations may not be applicable for individual vehicles.

Indicates a splice point number.
The splice point numbers are identical to those in "CIRCUIT DIAGRAMS," making them easy to use.
In addition, the splice point numbers are usually numbered clockwise.

Example: S 013

- Sequential number
- Prefix meaning splice point



INDEX

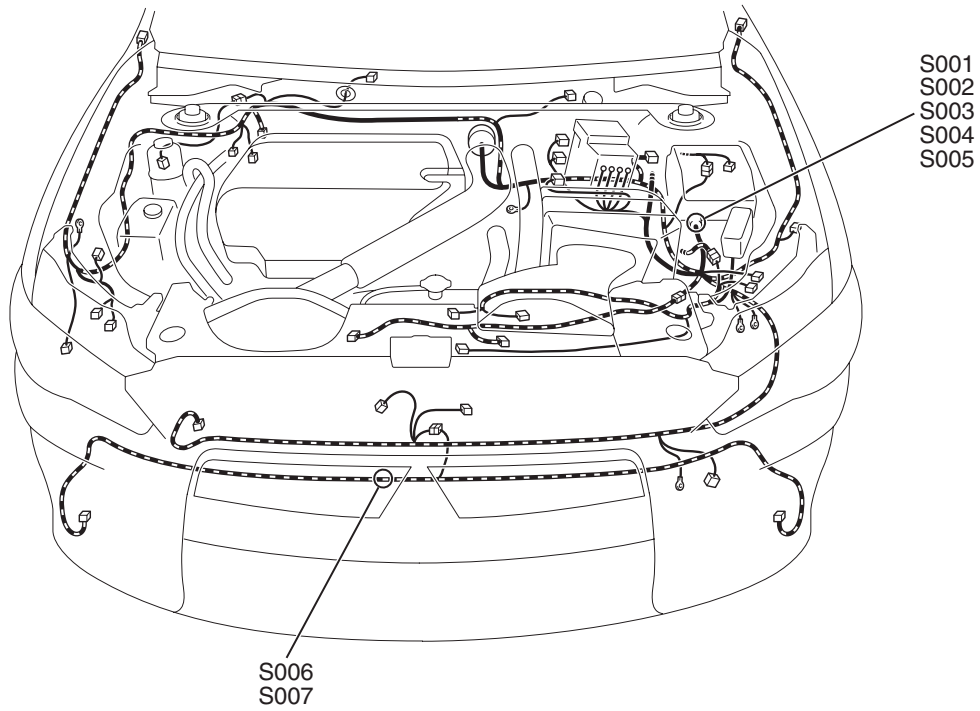
M1802000901345

This index shows the page numbers where the splice locations are.

SPLICE LOCATION NO.	PAGE	SPLICE LOCATION NO.	PAGE	SPLICE LOCATION NO.	PAGE	SPLICE LOCATION NO.	PAGE
S001	P.80B-4	S002	P.80B-4	S003	P.80B-4	S004	P.80B-4
S005	P.80B-4	S006	P.80B-4	S007	P.80B-4	S008	P.80B-4
S009	P.80B-4	S010	P.80B-4	S011	P.80B-4	S012	P.80B-4
S013	P.80B-4	S014	P.80B-5	S015	P.80B-5	S016	P.80B-5
S017	P.80B-5	S018	P.80B-5	S019	P.80B-5	S020	P.80B-5
S021	P.80B-5	S022	P.80B-5	S023	P.80B-5	S024	P.80B-5
S025	P.80B-5	S026	P.80B-5	S027	P.80B-5	S028	P.80B-5
S029	P.80B-5	S030	P.80B-5	S031	P.80B-5	S032	P.80B-5
S033	P.80B-5	S034	P.80B-5	S035	P.80B-5	S036	P.80B-5
S037	P.80B-5	S038	P.80B-5	S039	P.80B-5	S040	P.80B-5
S041	P.80B-5	S042	P.80B-5	S043	P.80B-5	S044	P.80B-5
S045	P.80B-5	S046	P.80B-5	S047	P.80B-5	S048	P.80B-5
S049	P.80B-5	S050	P.80B-5	S051	P.80B-5	S052	P.80B-5
S053	P.80B-6	S054	P.80B-6	S055	P.80B-6	S056	P.80B-6
S057	P.80B-6	S058	P.80B-6	S059	P.80B-6	S060	P.80B-6
S061	P.80B-6	S062	P.80B-6	S063	P.80B-6	S064	P.80B-5
S065	P.80B-6	S066	P.80B-5				

ENGINE COMPARTMENT

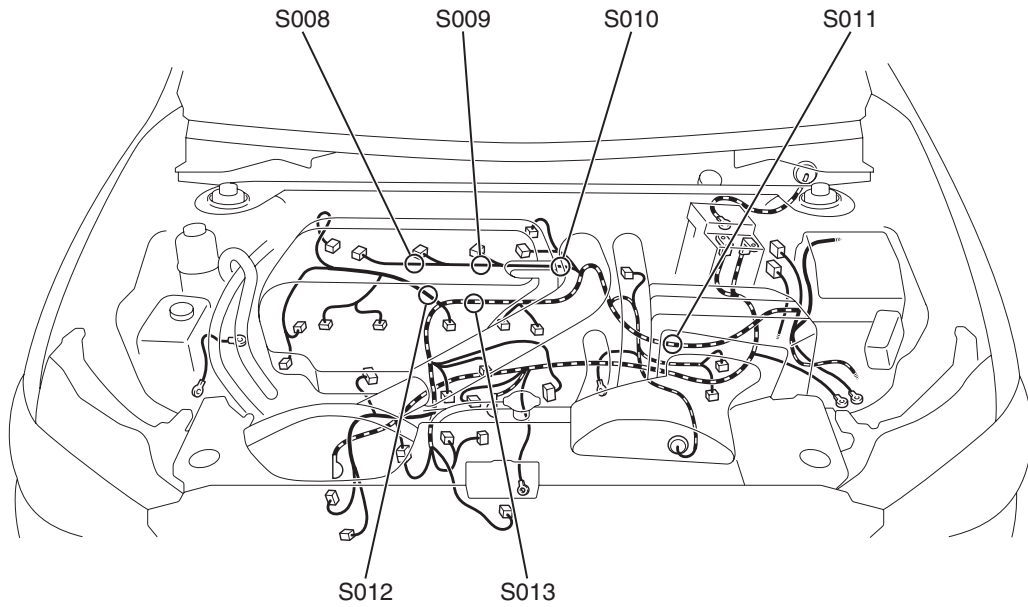
M1802000200945



AC708223AB

ENGINE AND TRANSAXLE

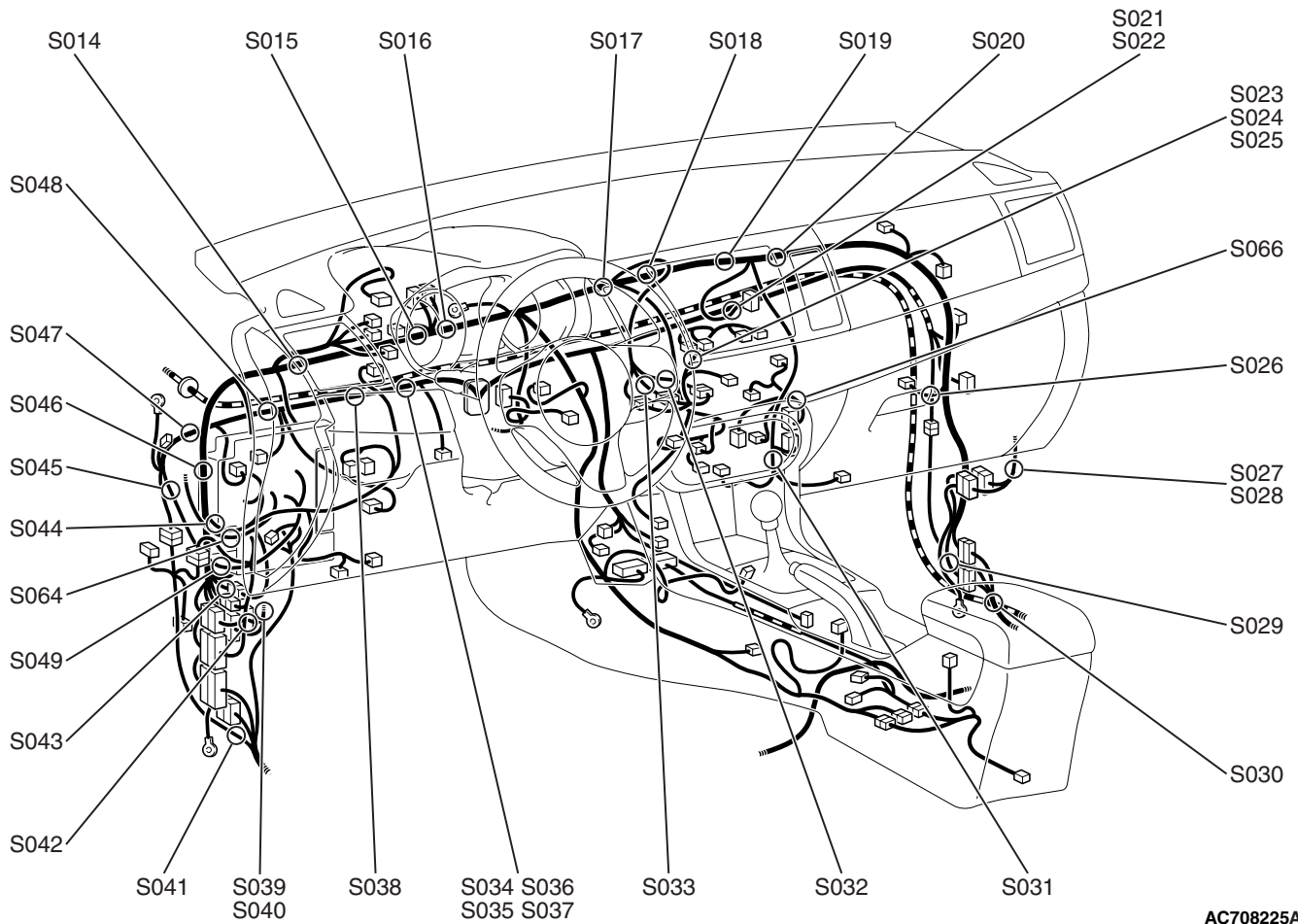
M1802001400931



AC708224AB

DASH PANEL

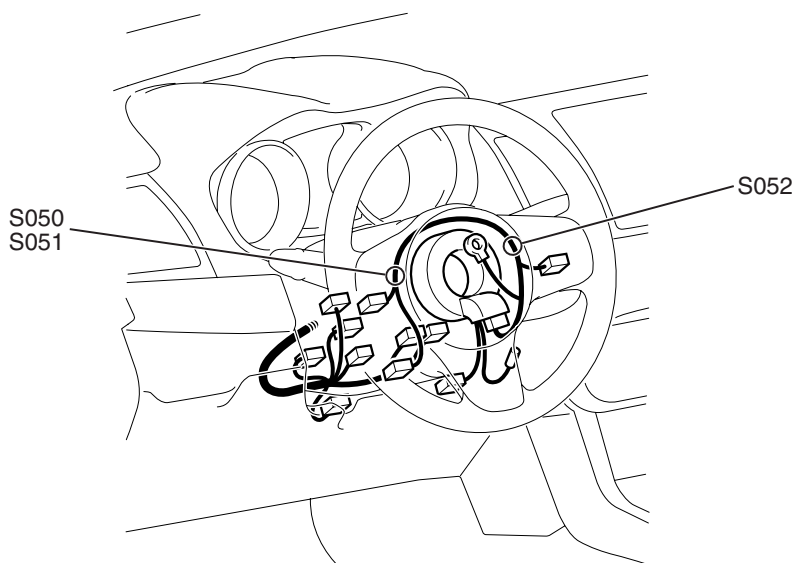
M1802000301172



AC708225AB

STEERING COLUMN

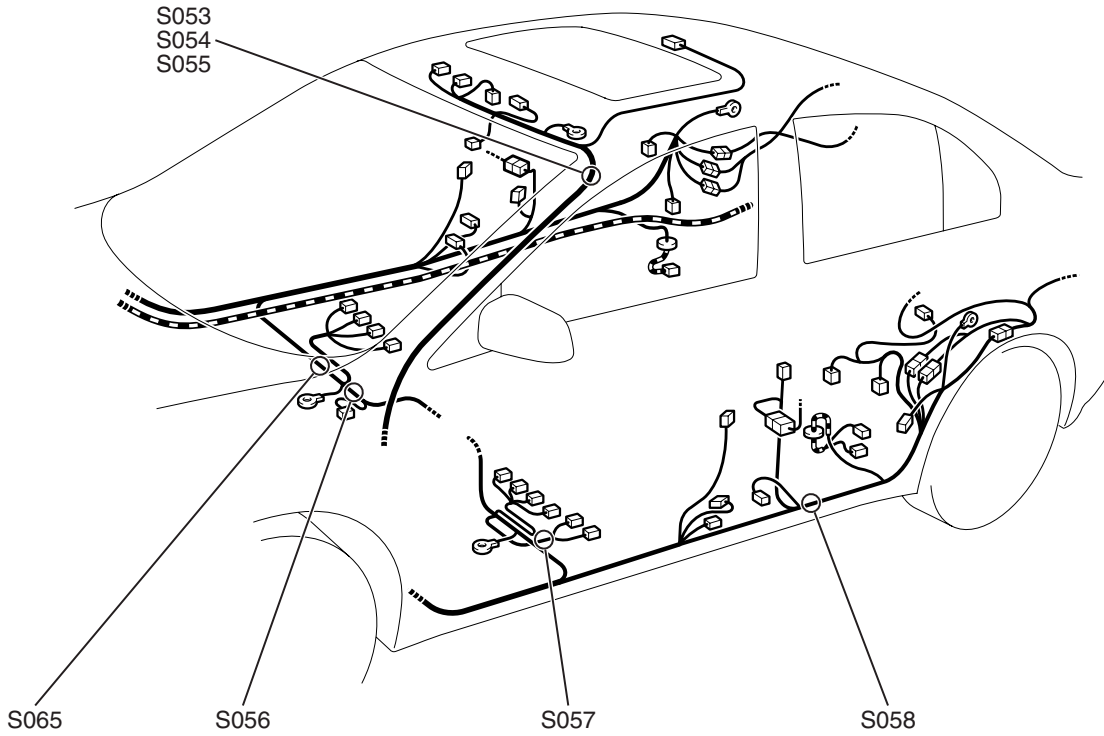
M1802000400228



AC708226AB

FLOOR AND ROOF

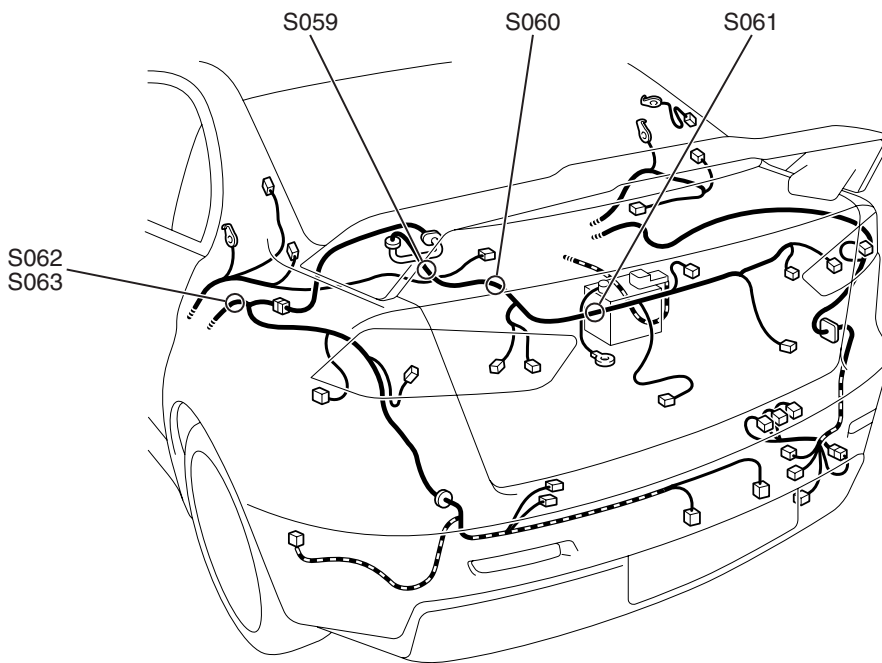
M1802001200915



AC708227AB

LUGGAGE COMPARTMENT

M1802000700296



AC708485AB