

# GROUP 52A

# INTERIOR

## CONTENTS

<b>GENERAL INFORMATION</b> .....	<b>52A-2</b>	<b>REMOVAL AND INSTALLATION</b> .....	<b>52A-15</b>
<b>SPECIAL TOOL</b> .....	<b>52A-2</b>	<b>HEADLINING</b> .....	<b>52A-17</b>
<b>INSTRUMENT PANEL ASSEMBLY*</b> .....	<b>52A-2</b>	<b>REMOVAL AND INSTALLATION</b> .....	<b>52A-17</b>
<b>REMOVAL AND INSTALLATION</b> .....	<b>52A-2</b>	<b>INSIDE REAR VIEW MIRROR</b> .....	<b>52A-19</b>
<b>GLOVE BOX</b> .....	<b>52A-6</b>	<b>SEAT ASSEMBLY*</b> .....	<b>52A-20</b>
<b>REMOVAL AND INSTALLATION</b> .....	<b>52A-6</b>	<b>FRONT SEAT ASSEMBLY</b> .....	<b>52A-20</b>
<b>INSTRUMENT CENTER PANEL</b> .....	<b>52A-7</b>	<b>REMOVAL AND INSTALLATION</b> .....	<b>52A-20</b>
<b>REMOVAL AND INSTALLATION</b> .....	<b>52A-7</b>	<b>INSPECTION</b> .....	<b>52A-22</b>
<b>INSTRUMENT LOWER PANEL</b> .....	<b>52A-8</b>	<b>DISASSEMBLY AND ASSEMBLY</b> .....	<b>52A-24</b>
<b>REMOVAL AND INSTALLATION</b> .....	<b>52A-8</b>	<b>REAR SEAT ASSEMBLY</b> .....	<b>52A-25</b>
<b>FLOOR CONSOLE ASSEMBLY</b> .....	<b>52A-9</b>	<b>REMOVAL AND INSTALLATION</b> .....	<b>52A-25</b>
<b>REMOVAL AND INSTALLATION</b> .....	<b>52A-9</b>	<b>DISASSEMBLY AND ASSEMBLY</b> .....	<b>52A-27</b>
<b>TRIMS</b> .....	<b>52A-11</b>	<b>SEAT BELT*</b> .....	<b>52A-28</b>
<b>REMOVAL AND INSTALLATION</b> .....	<b>52A-11</b>	<b>FRONT SEAT BELT</b> .....	<b>52A-28</b>
<b>DOOR TRIM</b> .....	<b>52A-15</b>	<b>REMOVAL AND INSTALLATION</b> .....	<b>52A-28</b>
		<b>INSPECTION</b> .....	<b>52A-29</b>
		<b>REAR SEAT BELT</b> .....	<b>52A-30</b>
		<b>REMOVAL AND INSTALLATION</b> .....	<b>52A-30</b>

### WARNINGS REGARDING SERVICING OF SUPPLEMENTAL RESTRAINT SYSTEM (SRS) EQUIPPED VEHICLES

#### **WARNING**

- *Improper service or maintenance of any component of the SRS, or any SRS-related component, can lead to personal injury or death to service personnel (from inadvertent firing of the air bag) or to the driver and passenger (from rendering the SRS inoperative).*
- *Service or maintenance of any SRS component or SRS-related component must be performed only at an authorized MITSUBISHI dealer.*
- *MITSUBISHI dealer personnel must thoroughly review this manual, and especially its GROUP 52B - Supplemental Restraint System (SRS) before beginning any service or maintenance of any component of the SRS or any SRS-related component.*

#### NOTE

The SRS includes the following components: SRS air bag control unit, SRS warning light, front impact sensors, driver's and passenger's (front) air bag modules, knee air bag module, side-airbag module, curtain air bag module, side impact sensors, seat belt pre-tensioners, clock spring, and interconnecting wiring. Other SRS-related components (that may have to be removed/installed in connection with SRS service or maintenance) are indicated in the table of contents by an asterisk (\*).

## GENERAL INFORMATION

M1522000100079

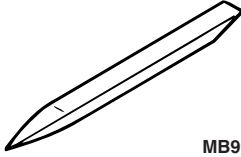
## OPERATION

## SEAT BELT WARNING SYSTEM

If the driver turns the ignition switch to the "ON" position without fastening the seat belt, the seat belt warning light illuminates.

## SPECIAL TOOL

M1521000600576

Tool	Tool number and name	Supersession	Application
 MB990784	MB990784 Ornament remover	General service tool	Removal of switch, trim, etc.

## INSTRUMENT PANEL ASSEMBLY

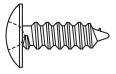
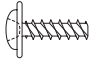
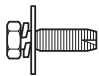
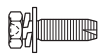
## REMOVAL AND INSTALLATION

M1521001701773

**⚠ WARNING**

**For removal and installation of the passenger's side air bag module, always observe the service procedures described in GROUP 52B, Air Bag Module and Clock Spring P.52B-386.**

The following bolts and screws are used for installing the instrument panel. Bolts and screws are indicated as marks shown in the illustration in the sections of "Removal and Installation" and "Disassembly and Assembly."

Name	Symbol	Size (D × L) mm	Color	Shape
Tapping screw	a	5 × 12	—	 AC104450
	b	5 × 16	—	
	c	5 × 12	—	 AC104436
Bolt with washer	d	5 × 20	—	 AC104417
	e	6 × 16	—	 AC104429

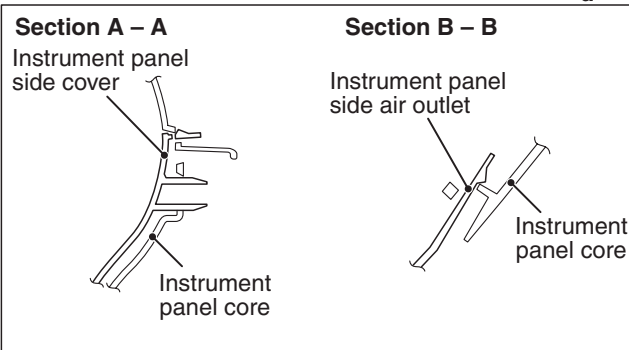
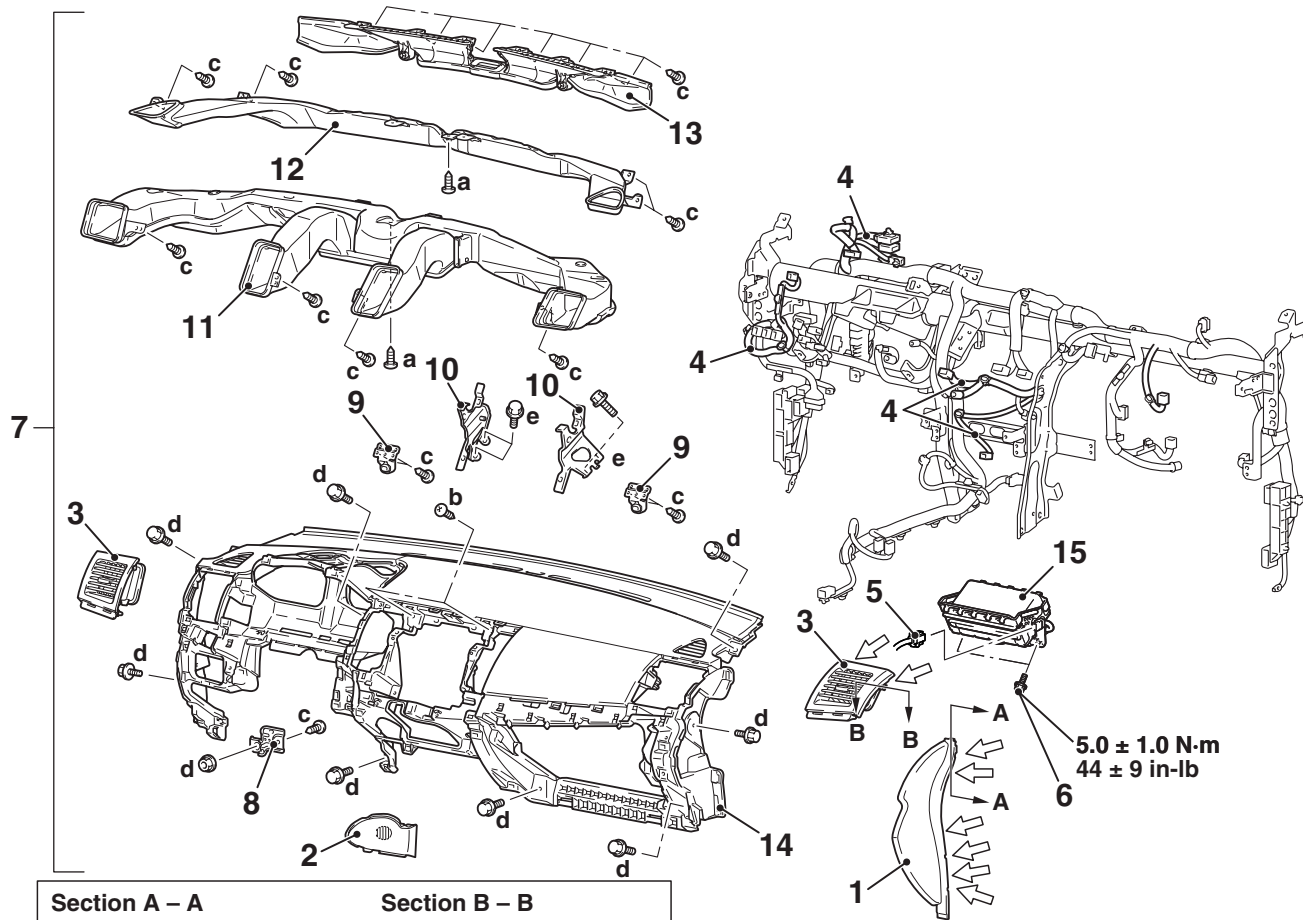
D: Thread diameter, L: Effective thread length

 **CAUTION**

- Refer to GROUP 52B-SRS Service Precautions [P.52B-386](#) and Air bag Module and Clock Spring [P.52B-393](#) before removing the passenger side air bag module.
- Do not subject the SRS-ECU to any shocks when removing or installing the instrument panel.

**Pre-removal and Post-installation Operation**

- Removal and Installation of Front Pillar Trim (Refer to [P.52A-11](#)).
- Removal and Installation of Instrument Under Cover (Refer to [P.52A-11](#)).
- Removal and Installation of Glove Box (Refer to [P.52A-11](#)).
- Removal and Installation of Instrument Cover Lower, Air Outlet Garnish (Refer to [P.52A-11](#)).
- Removal and Installation of Audio Unit (Refer to GROUP 54A, Radio with CD Player [P.54A-364](#)).
- Removal and Installation of Audio Visual Navigation Unit, GPS antenna (Refer to GROUP 54A, MMCS [P.54A-453](#)).
- Removal and Installation of Steering shaft (Refer to GROUP 37, Steering Column Shaft [P.37-26](#)).
- Removal and Installation of Hands-free Cellular Phone System (Refer to GROUP 54A, Hands-free Module [P.54A-517](#)).
- Removal and Installation of Sensors (Refer to GROUP 55, Interior Temperature Sensor [P.55-128](#)).



Note  
 : Claw positions  
 AC708407AB

**Removal steps**

1. Instrument panel side cover
2. Instrument panel console side cover
3. Instrument panel side air outlet
4. Instrument panel harness clamp
5. Passenger's (front) air bag module connector
6. Passenger's (front) air bag module mounting bolt
7. Instrument panel assembly

<<A>>

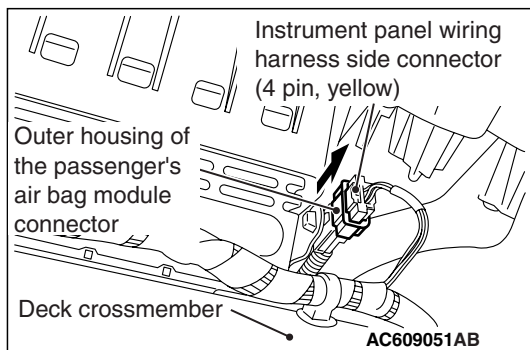
**Removal steps (Continued)**

8. Instrument panel side bracket lower
9. Instrument panel holder
10. Instrument panel reinforcement center
11. Ventilator air distribution duct
12. Side defroster duct
13. Defroster nozzle
14. Instrument panel
15. Passenger's (front) air bag module

<<B>>

## REMOVAL SERVICE POINTS

### <<A>> PASSENGER'S (FRONT) AIR BAG MODULE CONNECTOR REMOVAL



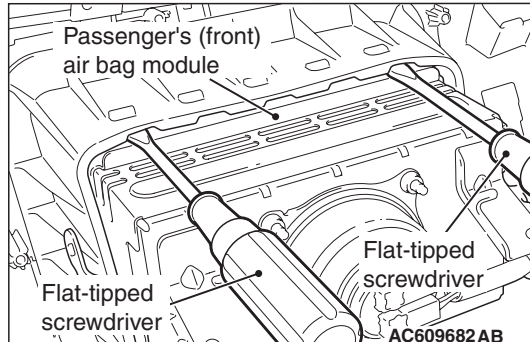
1. Remove the groove box upper cover. (Refer to [P.52A-6](#))
2. Slide the outer housing of the passenger's (front) air bag module connector in the arrow direction shown, and disconnect the connector.

### <<B>> PASSENGER'S (FRONT) AIR BAG MODULE REMOVAL

#### **⚠ WARNING**

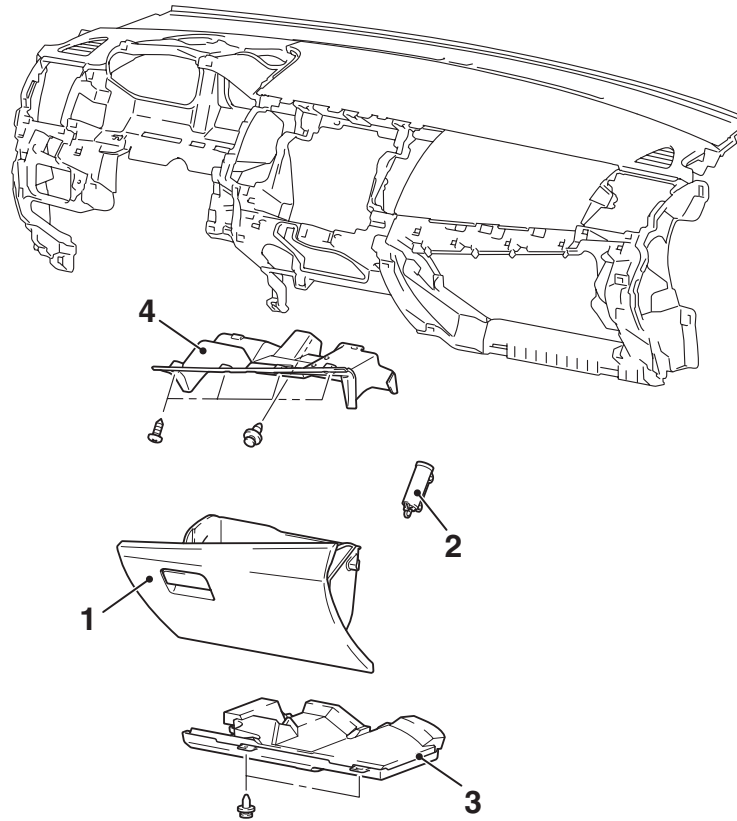
- *The air bag module must not be measured with such equipment as an ohmmeter.*
- *The air bag module must not be disassembled.*
- *The removed air bag module should be stored in a clean, dry place with the deployment surface facing up.*

Insert a flat-tipped screwdriver or similar tool to the location shown in the figure. After disengaging the tabs, remove the passenger's (front) air bag module.



**GLOVE BOX****REMOVAL AND INSTALLATION**

M1521011500089



AC708412AB

**Removal steps**

1. Glove box
2. Glove box damper

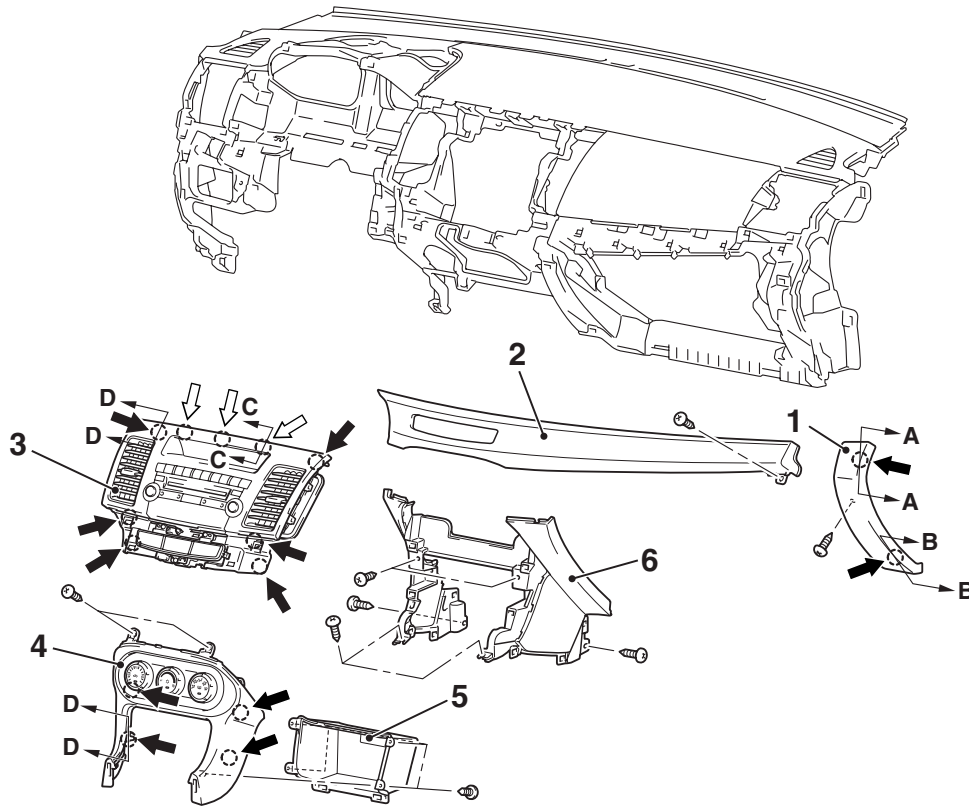
**Removal steps (Continued)**

3. Bottom cover (passenger side)
4. Glove box upper cover

# INSTRUMENT CENTER PANEL

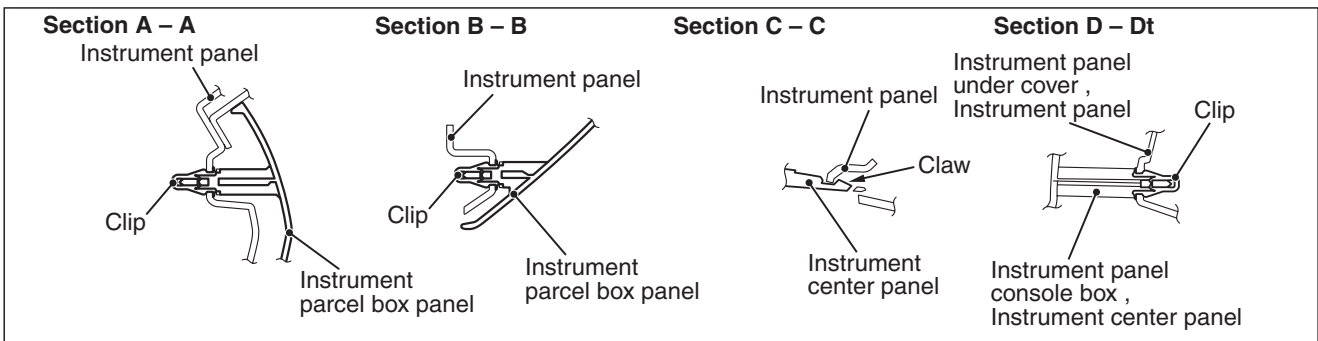
## REMOVAL AND INSTLLATION

M1521011300074



Note

- ← : Clip positions
- ⇐ : Claw positions



AC708413AB

### Removal steps

1. Instrument panel parcel box panel
2. Instrument panel air outlet garnish lower (RH)
3. Instrument center panel
- Floor console side cover (Refer to [P.52A-9](#)).

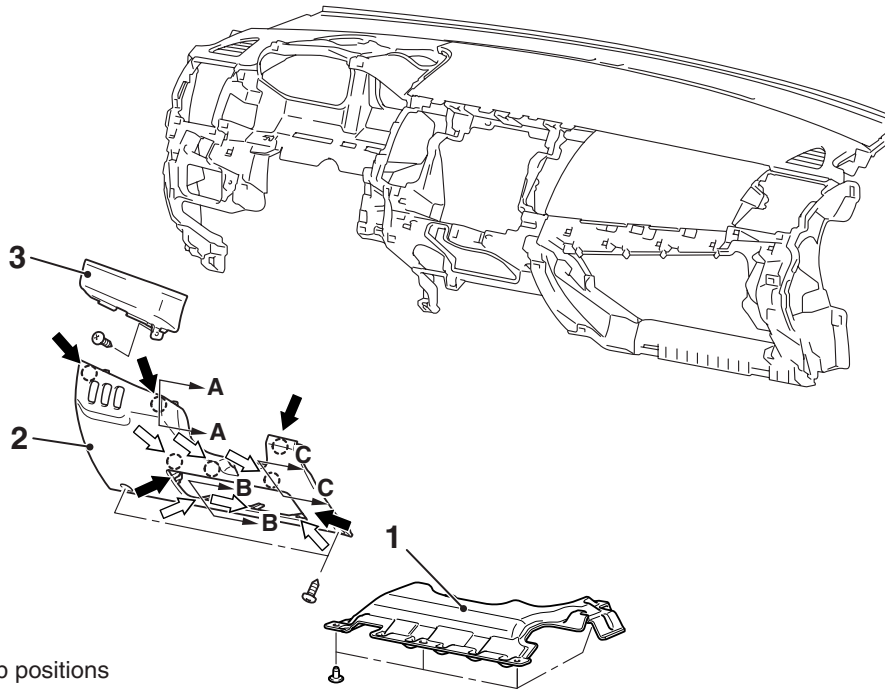
### Removal steps (Continued)

4. Instrument panel center lower
5. Instrument panel console box
- Instrument panel cover assembly (Refer to [P.52A-8](#)).
6. Instrument panel under cover

# INSTRUMENT LOWER PANEL

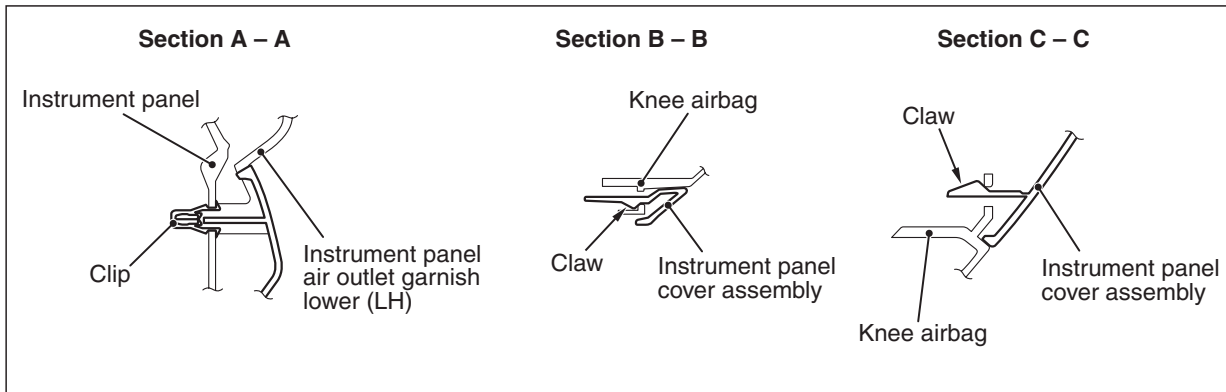
## REMOVAL AND INSTALLATION

M1521011700083



Note

- ➔ : Clip positions
- ➞ : Claw positions



AC708415 AB

### Removal steps

1. Instrument panel cover lower <MR>

### Removal steps (Continued)

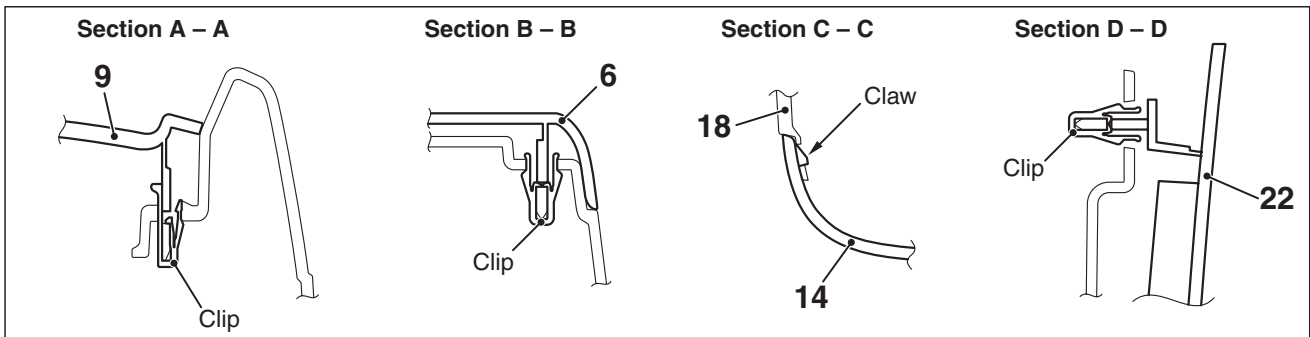
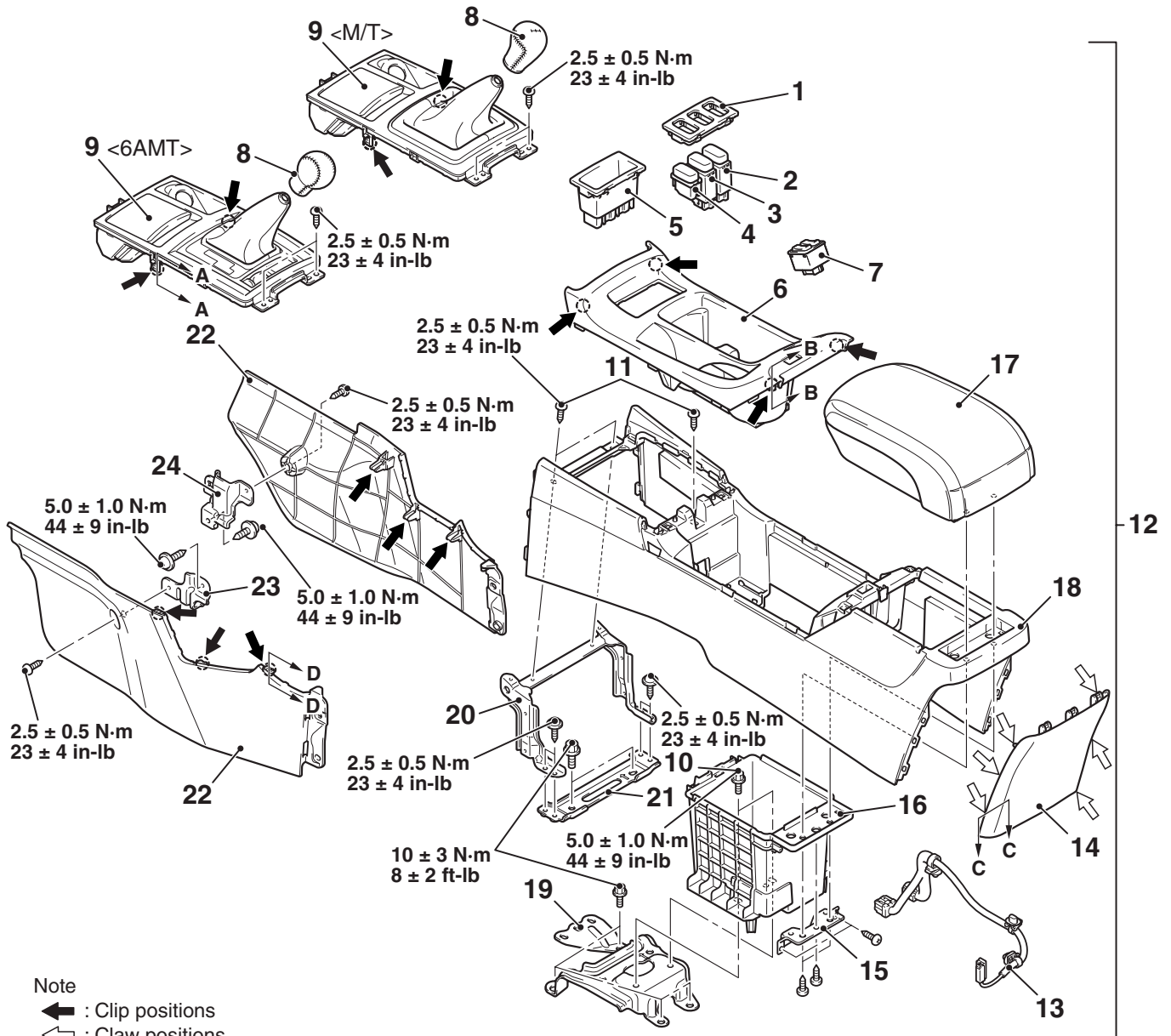
2. Instrument panel cover assembly
3. Instrument panel air outlet garnish lower (LH)



# FLOOR CONSOLE ASSEMBLY

## REMOVAL AND INSTALLATION

M1521005200487



AC708396AB

**Removal steps**

**Removal steps (Continued)**

>>A<<

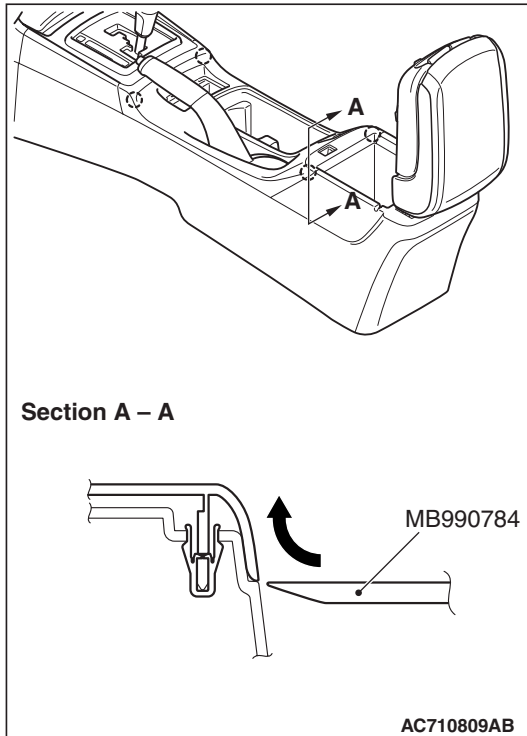
1. Floor console switch panel
2. AWC switch or Floor console plug >>B<<  
<Option>
3. Floor console plug
4. Floor console plug
5. Floor console tray
6. Floor console box cup holder
7. Heated seat switch <Vehicles with heated seat>
8. Shift knob
9. Floor console panel assembly
10. Floor console assembly mounting bolt
11. Floor console assembly mounting screw
12. Floor console assembly

13. Floor console harness
14. Floor console cover
15. Floor console bracket
16. Floor console box
17. Floor console armrest
18. Floor console rear
19. Floor console bracket rear
20. Floor console bracket (A)
21. Floor console bracket (B)
22. Floor console side cover
23. Floor console front bracket front (LH)
24. Floor console front bracket front (RH)

**REASSEMBLY SERVICE POINT**

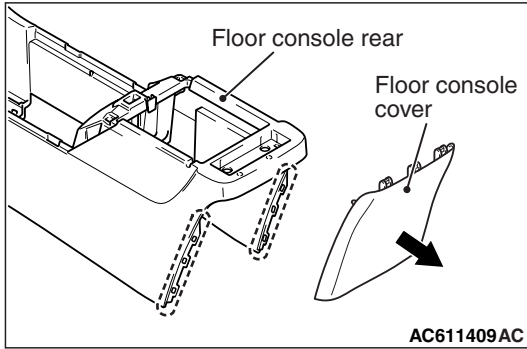
**>>A<< FLOOR CONSOLE BOX CUP HOLDER REASSEMBLY**

Remove by using special tool MB990784 (ornament remover) as shown in the figure.



>>B<< FLOOR CONSOLE COVER REASSEMBLY

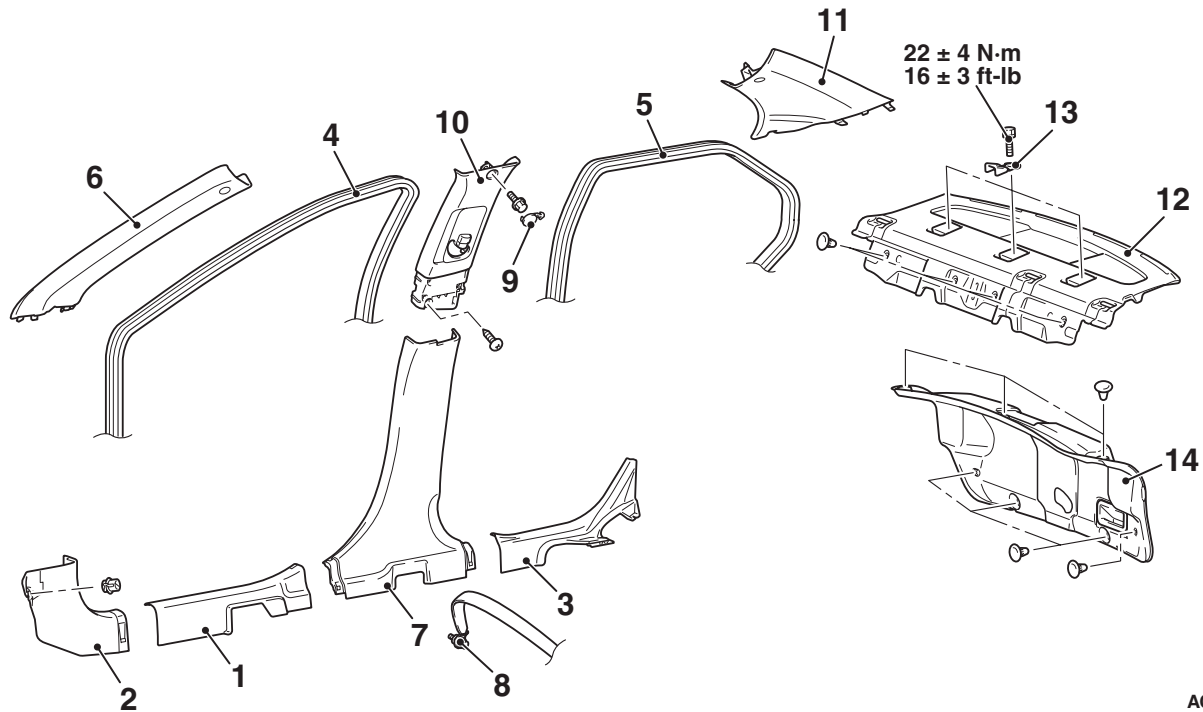
Floor console rear ends (shown in the dotted lines) may damage when removing the floor console cover. You can neglect this damage and floor console rear is reusable.



TRIMS

REMOVAL AND INSTALLATION

M1521001101232



AC709234AB

**Removal steps**

1. Front scuff plate
2. Cowl side trim
- Rear seat cushion (Refer to [P.52A-25](#)).
3. Rear scuff plate
4. Front door opening trim
5. Rear door opening trim
6. Front pillar trim
7. Center pillar trim lower
8. Outer seat belt mounting bolt (Refer to [P.52A-28](#)).
9. Center pillar trim upper cap

**Removal steps (Continued)**

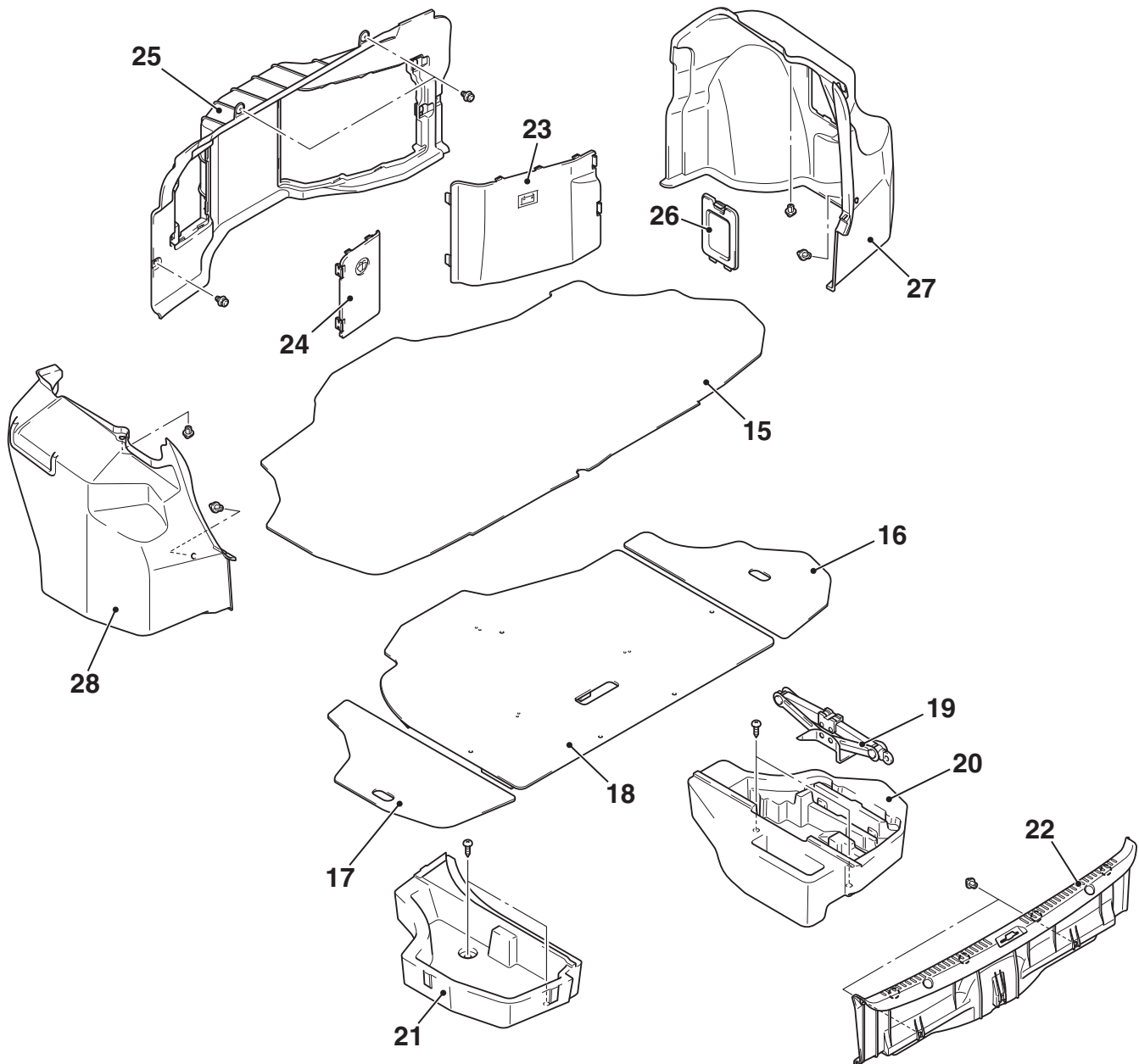
- Outer seat belt (Refer to [P.52A-28](#)).
- 10. Center pillar trim upper
- 11. Rear pillar trim
- Seat side back (Refer to [P.52A-25](#)).
- 12. Rear shelf trim
- 13. Child restraint fitting
- 14. Trunk lid trim

**Required Special Tool:**

- MB990784: Ornament Remover

<<A>>

## &lt;TRUNK ROOM&gt;



AC710471AD

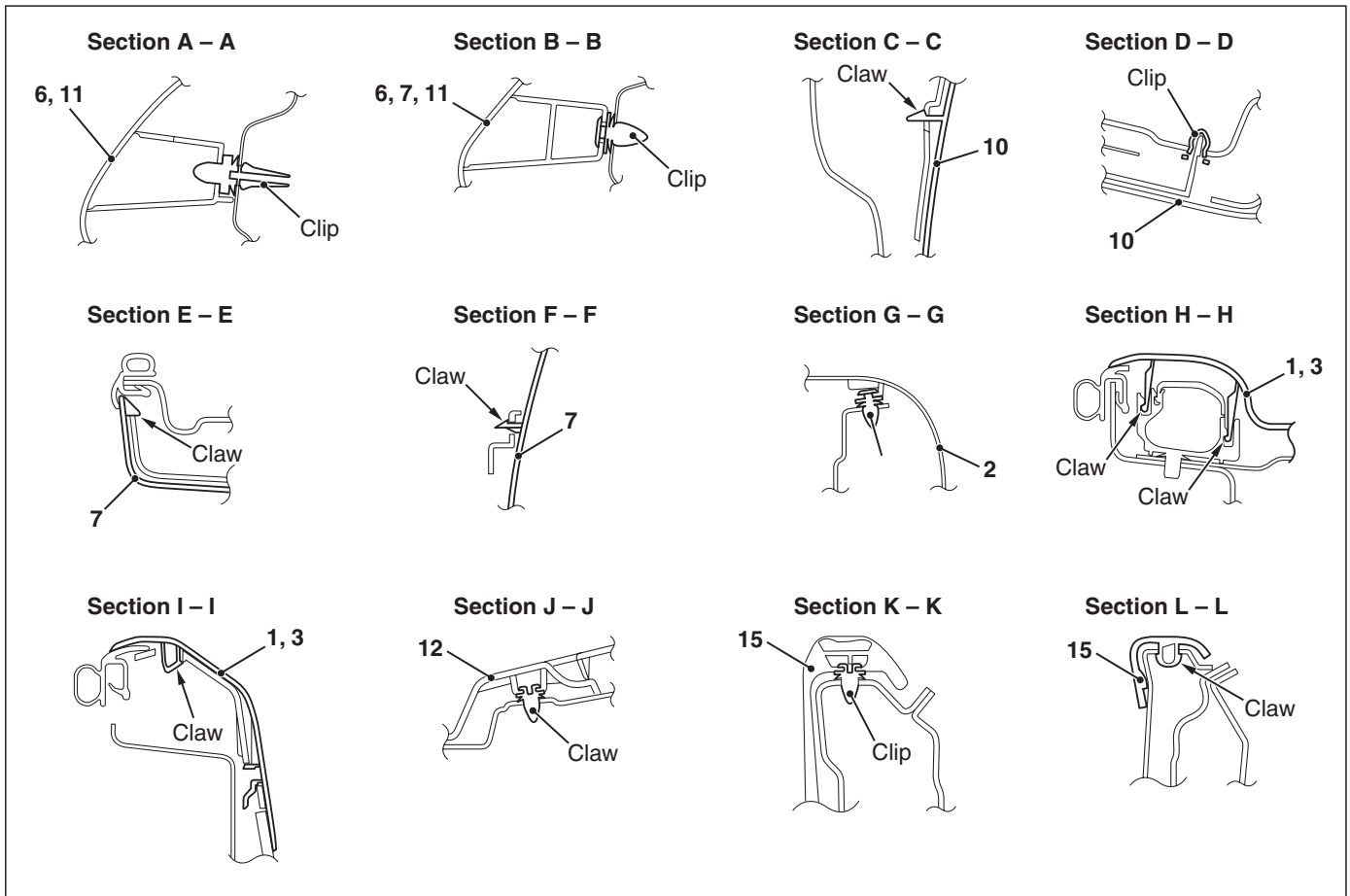
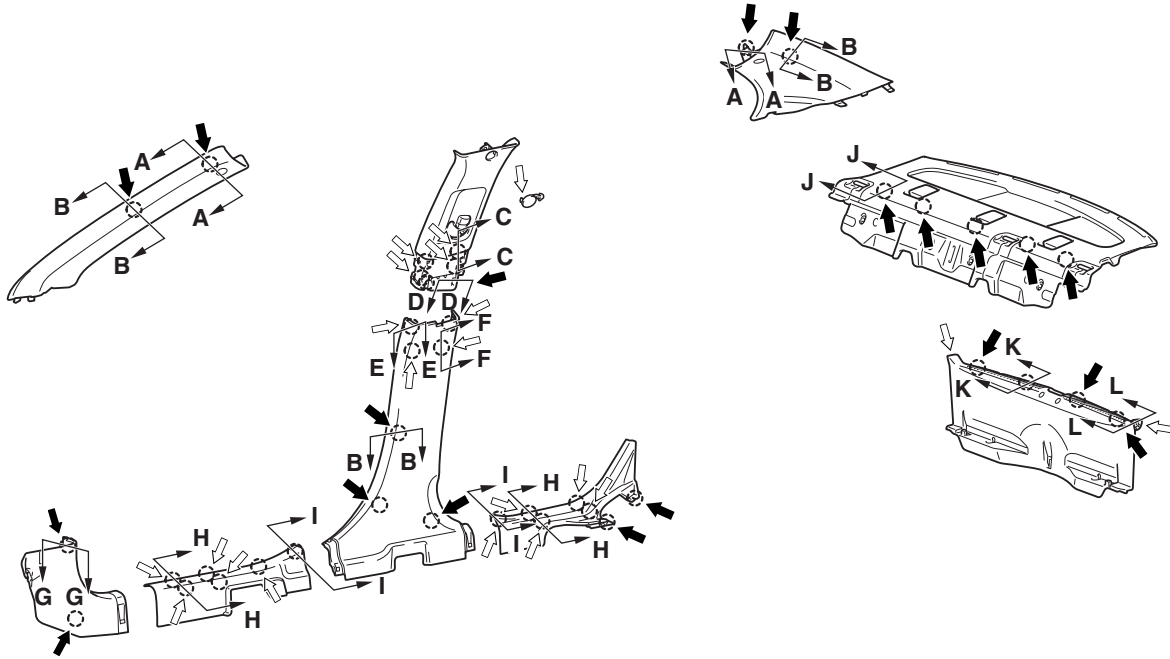
**Removal steps**

15. Trunk room mat
16. Trunk room floor side board (RH)
17. Trunk room floor side board (LH)
18. Trunk room floor board
19. Jack
20. Trunk room box (RH)
21. Trunk room box (LH)
- Trunk lid weatherstrip (Refer to GROUP 42A, Trunk lid [P.42A-147](#)).
22. Rear end trim

**Removal steps (Continued)**

23. Trunk room trim cover (RH)
24. Trunk room trim cover (LH)
25. Trunk room trim front
26. Trunk room side trim lid
27. Trunk room side trim (RH)
- Rear speaker box assembly (Refer to GROUP 54A, Speaker [P.54A-575](#)).
28. Trunk room side trim (LH)

CLIP POSITION



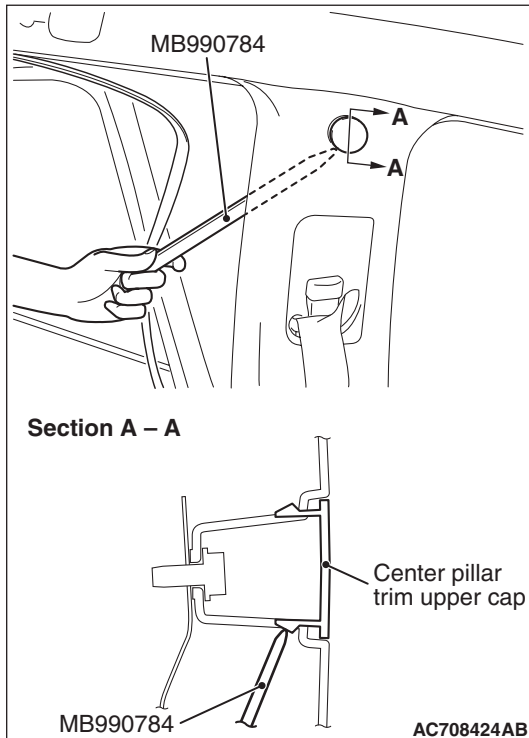
AC708417AB

*NOTE: Each number in the illustration indicates a part number.*

## REMOVAL SERVICE POINT

<<A>> CENTER PILLAR TRIM UPPER CAP  
REMOVAL

Remove the opening trim. Remove the center pillar trim upper cap by inserting the special tool MB990784 between the center pillar trim upper and body as shown in the illustration.

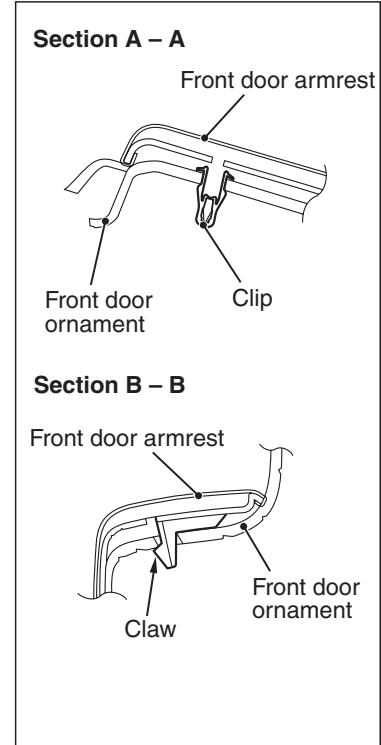
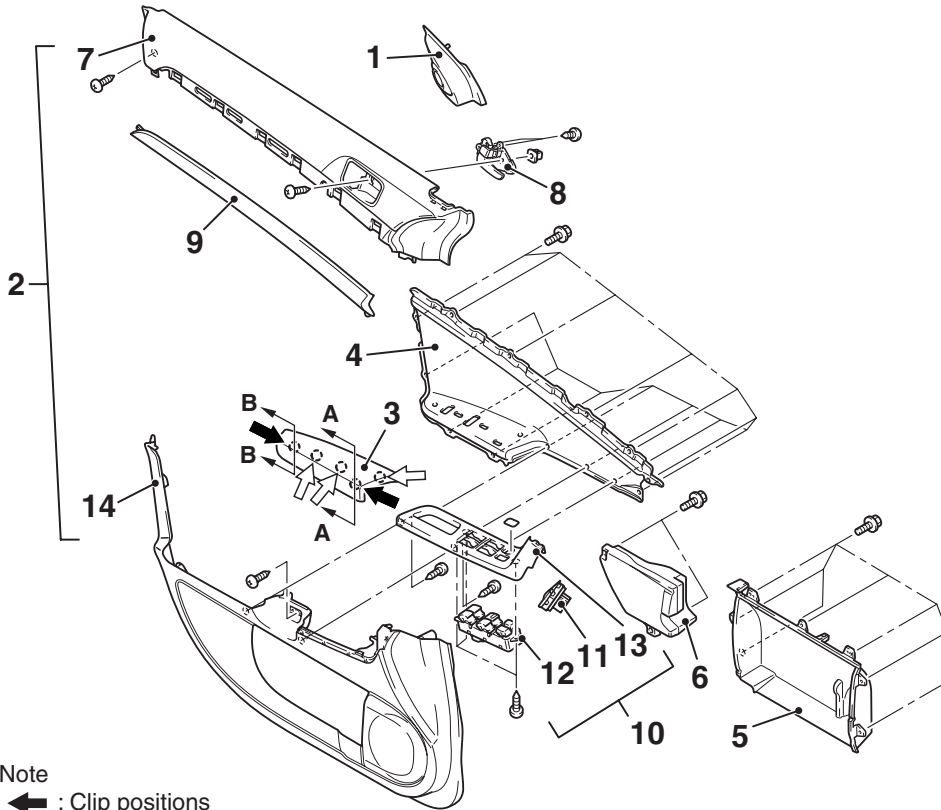


# DOOR TRIM

## REMOVAL AND INSTALLATION

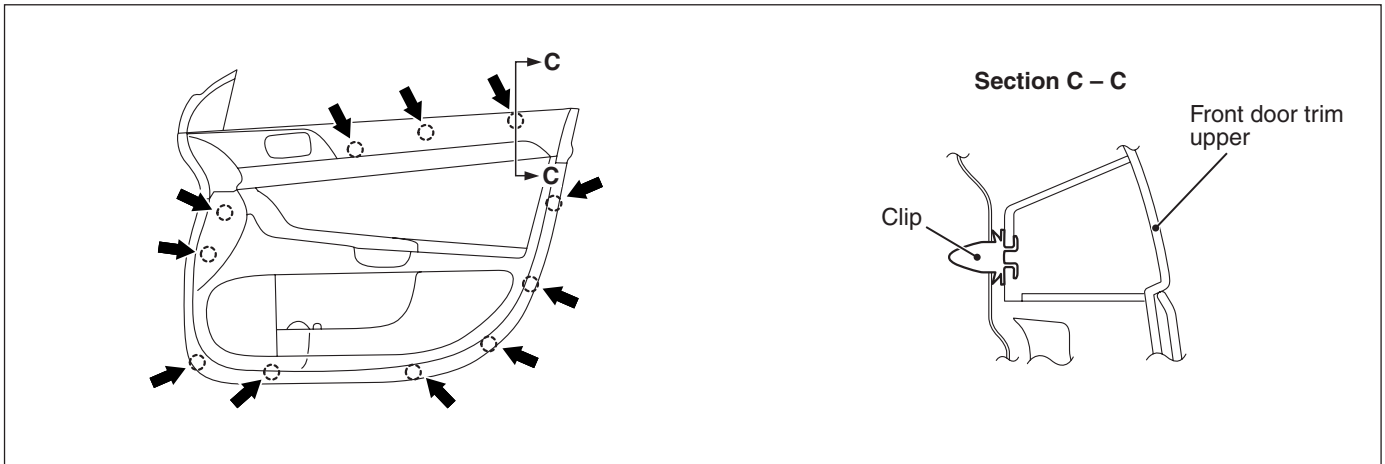
M1521006400945

<Front door trim>



Note

- ➔ : Clip positions
- ➦ : Claw positions



AC708425AB

### Removal steps

1. Front door sash trim
2. Front door trim assembly
3. Front door armrest <MR>
4. Front door ornament
5. Front door pocket
6. Front lower pad energy absorption
7. Front door trim upper
8. Door inside handle
9. Decoration panel

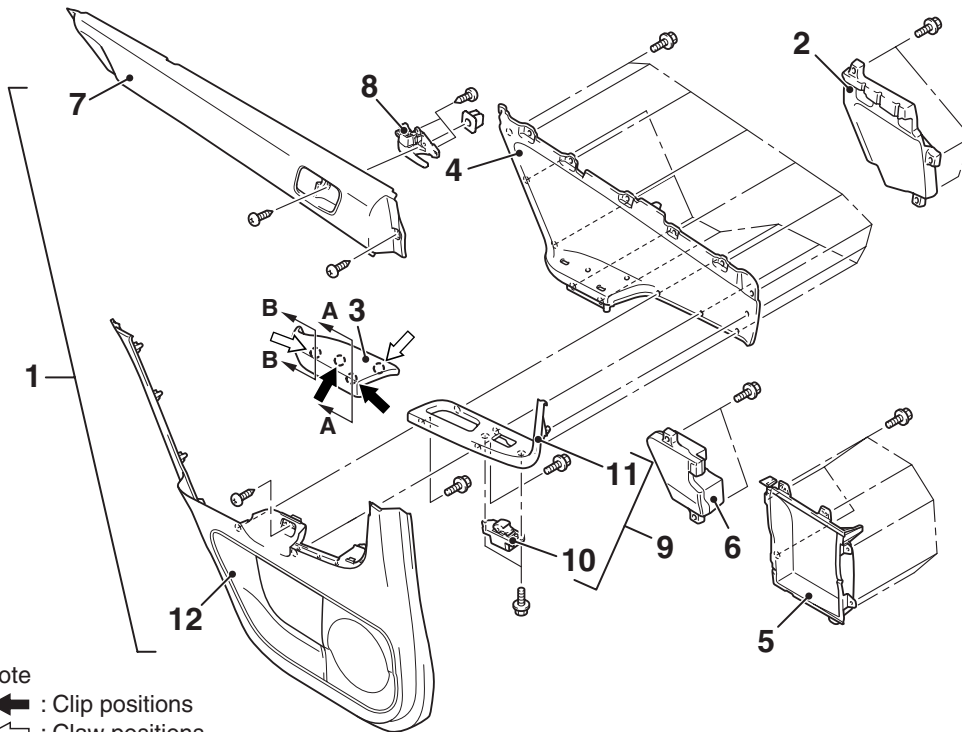
### Removal steps (Continued)

10. Front door power window switch panel assembly
11. Remote control mirror switch
12. Front door power window switch
13. Front power window switch panel
14. Front door trim lower

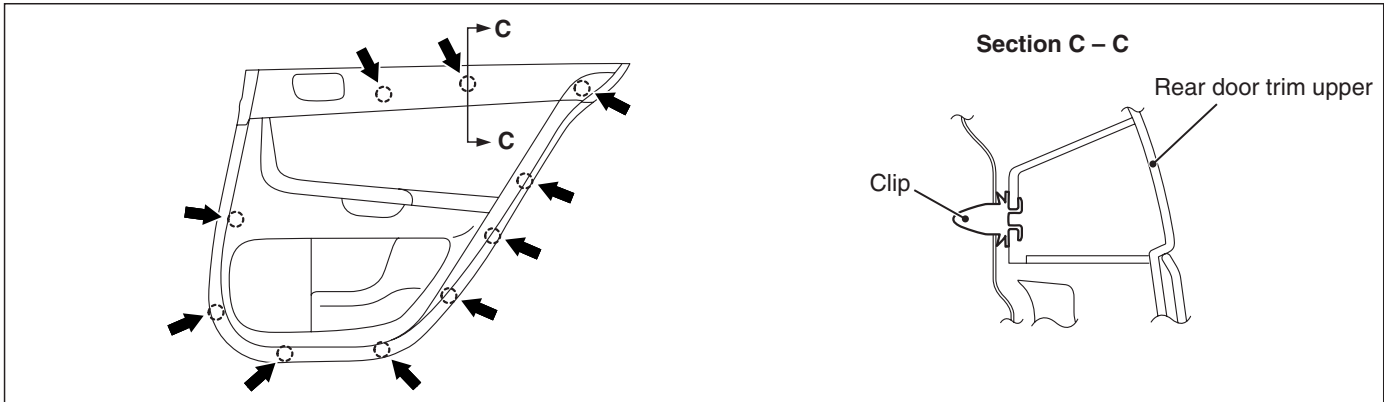
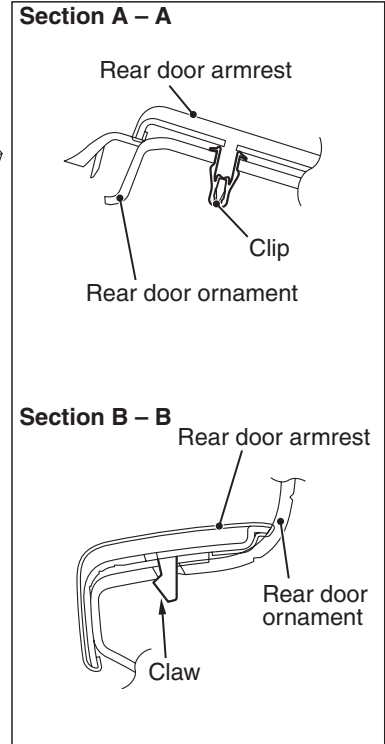
### Required Special Tool:

- MB990784: Ornament Remover

<Rear door trim>



Note  
 ← : Clip positions  
 ↖ : Claw positions



AC708426AB

**Removal steps**

1. Rear door trim assembly
2. Rear upper pad energy absorption
3. Rear door armrest <MR>
4. Rear door ornament
5. Rear door pocket
6. Rear lower pad energy absorption
7. Rear door trim upper
8. Door inside handle

**Removal steps (Continued)**

9. Rear door power window switch panel assembly
10. Rear door power window switch
11. Rear power window switch panel
12. Rear door trim lower

**Required Special Tool:**

- MB990784: Ornament Remover



# HEADLINING

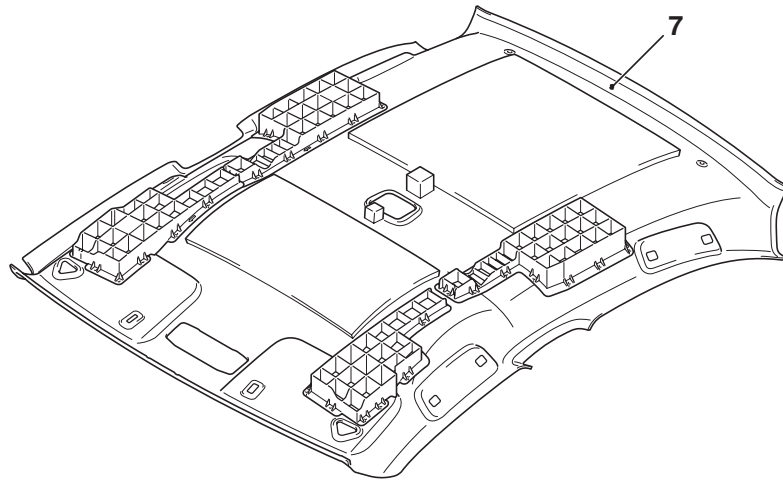
## REMOVAL AND INSTALLATION

M1521001401181

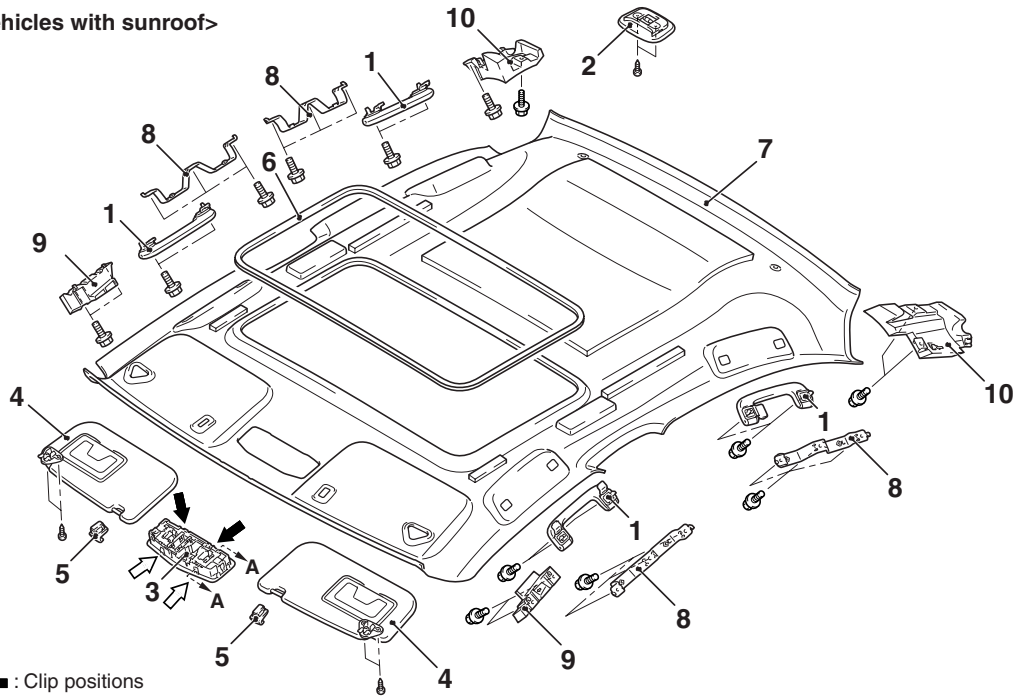
### Pre-removal and Post-installation Operation

- Removal and Installation of Front Pillar Trim, Upper Center Pillar Trim, Rear Pillar Trim (Refer to P.52A-11).
- Removal and Installation of Instrument Under Cover (Refer to P.52A-7).

<Vehicles without sunroof>



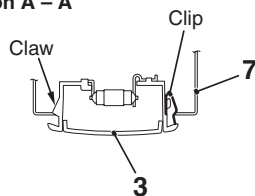
<Vehicles with sunroof>



Note

- (1) ← : Clip positions  
(2) ← : Claw positions

### Section A - A



AC710764AB

**Removal steps**

1. Assist grip
2. Rear dome light assembly <Vehicles without sunroof>
3. Front dome light
4. Sun visor assembly
5. Sun visor holder
6. Sunroof lid inner weather strip rear <Vehicles with sunroof>
7. Headlining

&lt;&lt;A&gt;&gt;

&lt;&lt;B&gt;&gt;

**Removal steps (Continued)**

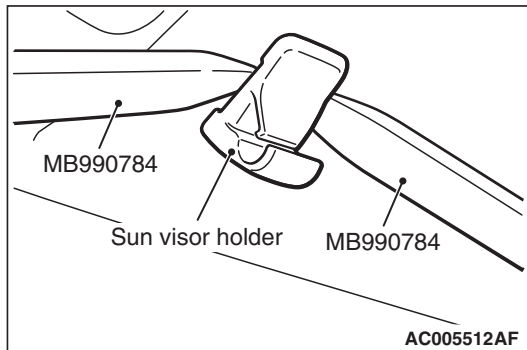
8. Assist grip bracket
9. Front side roof energy absorption box <Vehicle with sunroof>
10. Rear side roof energy absorption box <Vehicle with sunroof>

**Required Special Tool:**

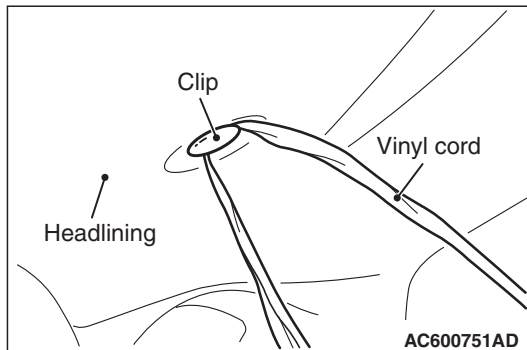
- MB990784: Ornament Remover

**REMOVAL SERVICE POINTS****<<A>> SUN VISOR HOLDER REMOVAL**

Insert the special tool MB990784 into side claws of the sun visor holder through the both sides of the sun visor holder to remove the hinges.

**<<B>> HEADLINING ASSEMBLY REMOVAL**

To remove the clip, insert a vinyl cord into a clearance between the clip and the headlining, and pass it around the clip. Then, pull out the clip downwards while pulling the vinyl cord.



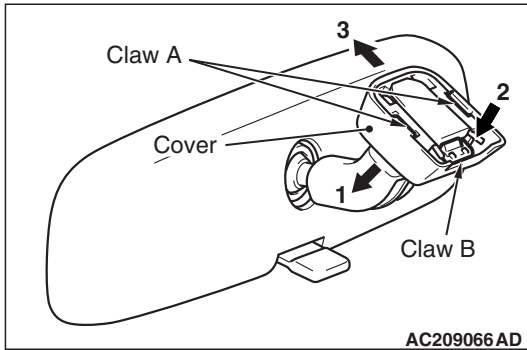
## INSIDE REAR VIEW MIRROR

M1521002600594

### REMOVAL SERVICE POINT

1. Disengage claw A and lower the cover in the arrow 1 direction.
2. Push claw B in the arrow 2 direction to unlock, and pull out the mirror in the arrow 3 direction.

*NOTE: For how to install the room mirror button to the windshield, refer to GROUP 42A - Windshield [P.42A-19](#).*



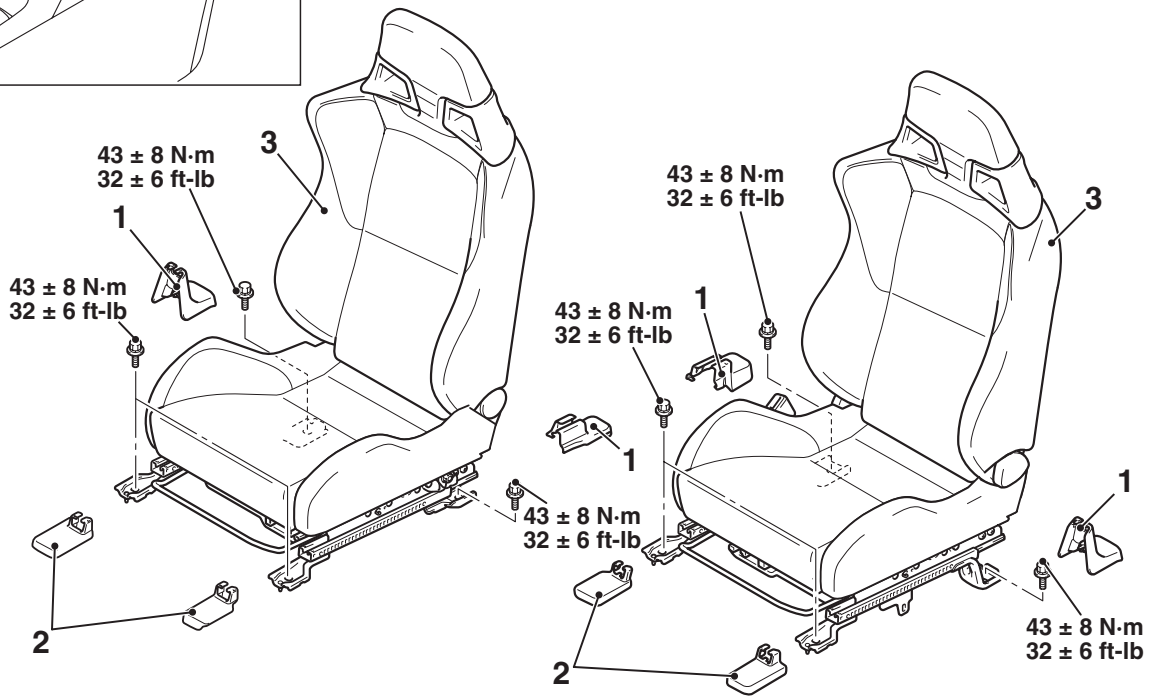
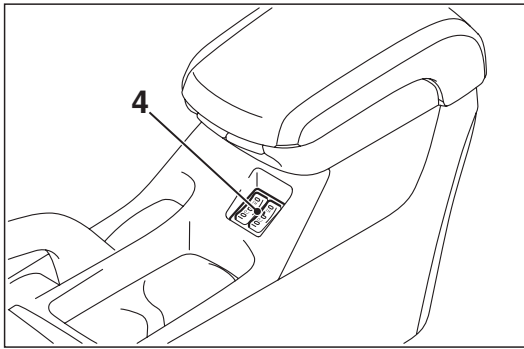
# SEAT ASSEMBLY

## FRONT SEAT ASSEMBLY REMOVAL AND INSTALLATION

M1522001301381

**⚠ WARNING**

Before removing the front seat assembly, refer to **GROUP 52B, Service Precautions P.52B-25** and **Air Bag Module and Clock Spring P.52B-386**.



AC708433AB

**Front seat assembly removal steps**

1. Front seat anchor cover rear
2. Front seat anchor cover front
- Harness connector

<<A>>

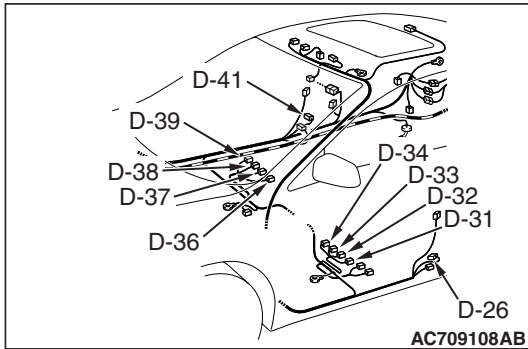
**Front seat assembly removal steps (Continued)**

- >>A<<
3. Front seat assembly
  4. Heated seat switch <Vehicles with heated seat> (Refer to [P.52A-9](#)).

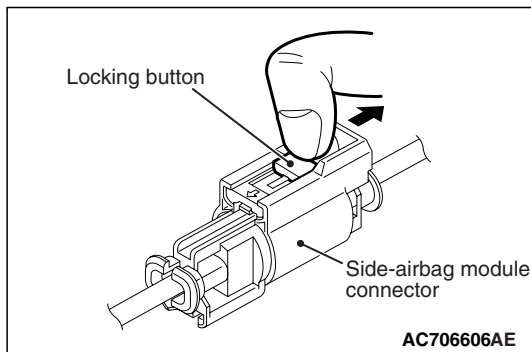
REMOVAL SERVICE POINT

<<A>> WIRING HARNESS CONNECTOR DISCONNECTION

Disconnect the following wiring harness connectors:



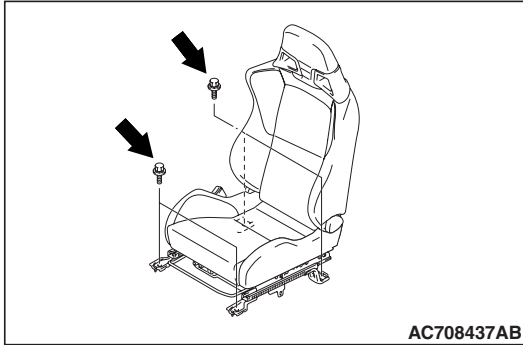
Connector number	Connector name
D-26 (2 –yellow)	Side impact sensor connector (LH)
D-31 (4 –black)	Heated seat assembly connector (LH) <Vehicle with heated seat>
D-32 (2 –gray)	Seat slide sensor connector (Driver's seat)
D-33 (4 –black)	Seat belt switch connector (Driver's seat)
D-34 (2 –yellow)	Side airbag module (squib) connector (LH) <Vehicles with side airbag>
D-36 (2 –yellow)	Side airbag module (squib) connector (RH) <Vehicles with side airbag>
D-37 (2 –black)	Seat belt switch connector (Passenger's seat)
D-38 (4 –black)	Heated seat assembly connector (RH) <Vehicle with heated seat>
D-39 (6)	Front seat assembly connector (RH)
D-41 (2 –yellow)	Side impact sensor (RH) connector



*NOTE: When disconnecting the side air bag module connectors of D-34 and D-36, unlock the connector by sliding the locking button to the direction of the arrow as shown in the figure, and then disconnect the connector.*

## INSTALLATION SERVICE POINT

## &gt;&gt;A&lt;&lt; FRONT SEAT ASSEMBLY INSTALLATION



AC708437AB

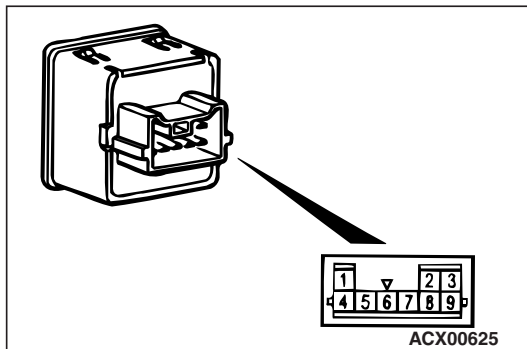
1. Temporarily tighten the bolts in all mounting locations shown in the illustration with no load applied to the front seat cushion and check the operation of the seat slide.
2. Tighten the bolts in all mounting locations to the specified torque.

## INSPECTION

M1522005500339

## CONTINUITY TEST OF HEATED SEAT SWITCH

1. Check for continuity between terminals.



ACX00625

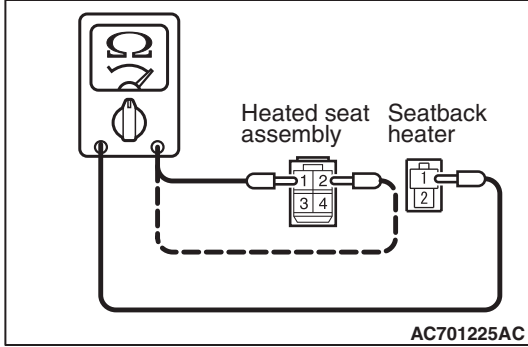
Item	Switch position	Tester connection	Specified condition
Driver's seat side	HI	1 –5, 3 –8	Continuity exists (2Ω or less)
	OFF	1 –5, 3 –5, 5 –8	Open circuit
	LO	3 –5	Continuity exists (2Ω or less)
Front passenger's seat side	HI	4 –5, 8 –9	Continuity exists (2Ω or less)
	OFF	4 –5, 5 –8, 5 –9	Open circuit
	LO	5 –9	Continuity exists (2Ω or less)

2. Check that the indicator is lighted at HI or LO when battery voltage is supplied to terminal 5 and terminal 8 is grounded.
3. Check that indicator is lighted when battery voltage is supplied to terminals 2 and terminal 6.

### SEAT CUSHION HEATER CHECK

Measure the resistance between terminals.

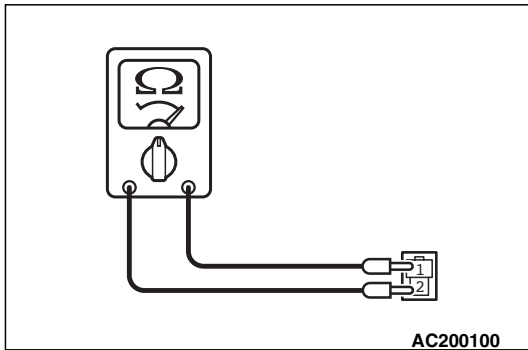
- Standard value: At room temperature 20 °C (68 °F)**
- Between heated seat assembly terminals 1 and seatback heater terminal 1:  $3.84 \pm 4.69$  ohms**
- Between heated seat assembly terminals 2 and seatback heater terminal 1:  $0.14 \pm 0.18$**



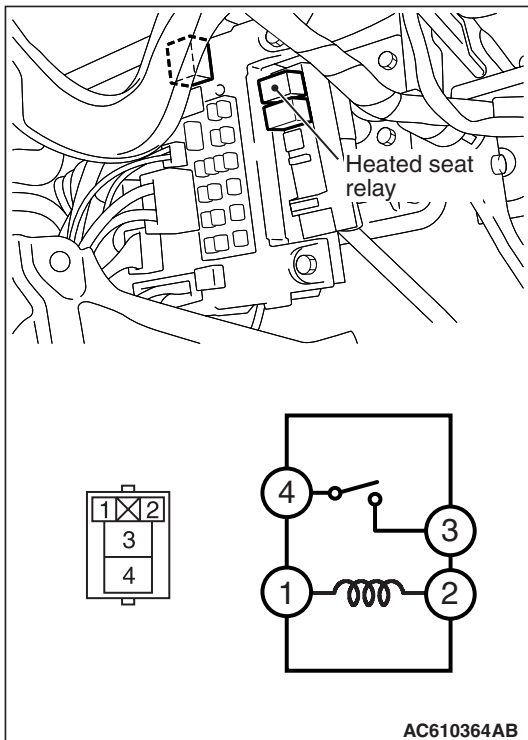
### SEATBACK HEATER CHECK

Measure the resistance between terminals.

- Standard value: At room temperature 20 °C (68 °F)**
- Between terminals 1 and terminal 2:  $5.40 \pm 6.60$  ohms**



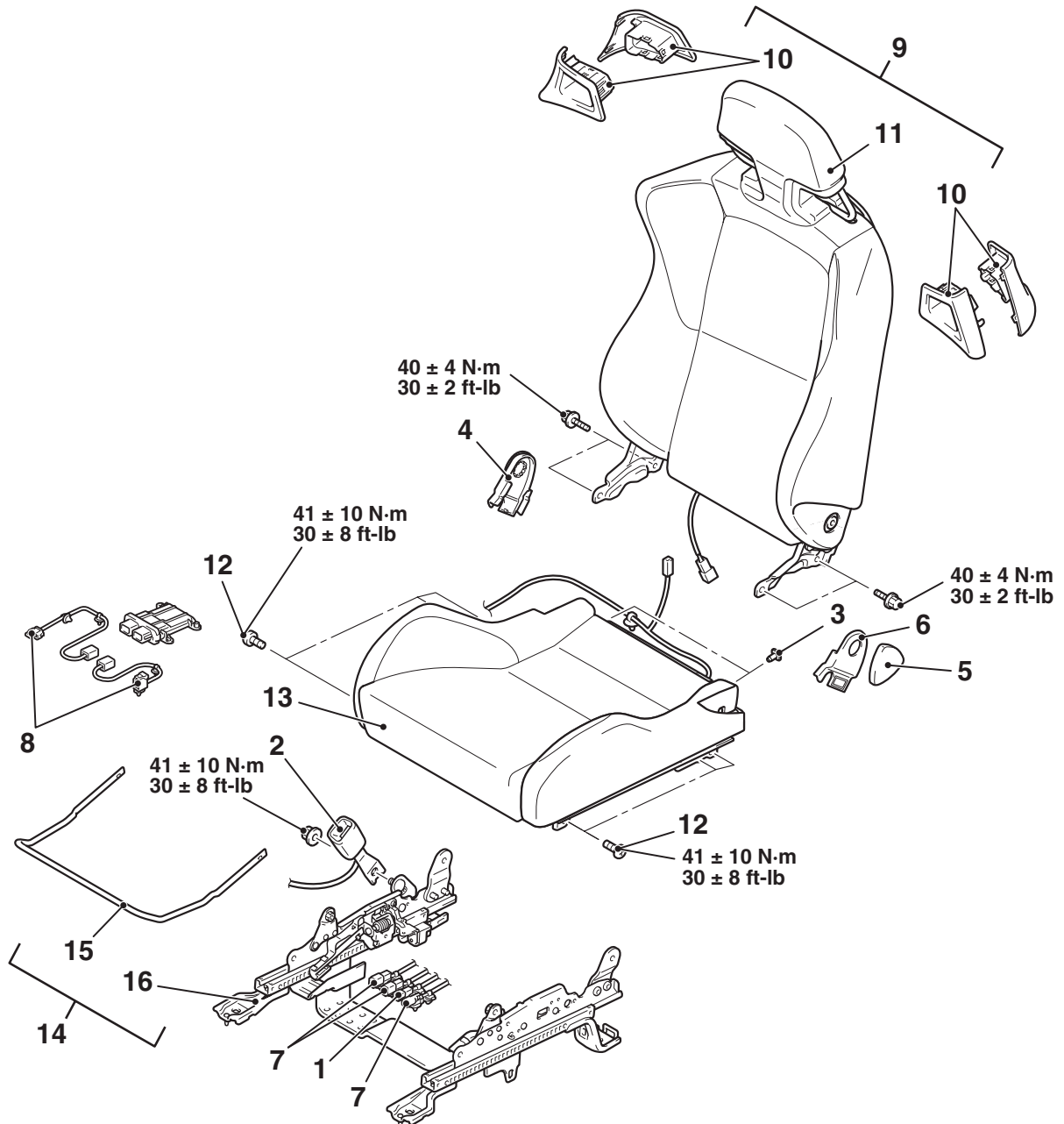
### HEATED SEAT RELAY CONTINUITY CHECK



Battery voltage	Tester connection	Specified condition
Not applied	3 -4	Open circuit
<ul style="list-style-type: none"> <li>• Connect terminal 1 to the positive battery terminal</li> <li>• Connect terminal 2 to the negative battery terminal</li> </ul>		Continuity exists ( $2\Omega$ or less)

## DISASSEMBLY AND ASSEMBLY

M1522001501415



AC709596AB

**Disassembly steps**

1. Seat belt harness connector
2. Seat belt inner
3. Seat cushion cover fixation clip
4. Hinge cover
5. Reclining adjuster knob
6. Side shield cover
7. Heated seat & Side air bag harness & Seat slide sensor connector
8. Front seat assembly harness connector (Passenger's seat)

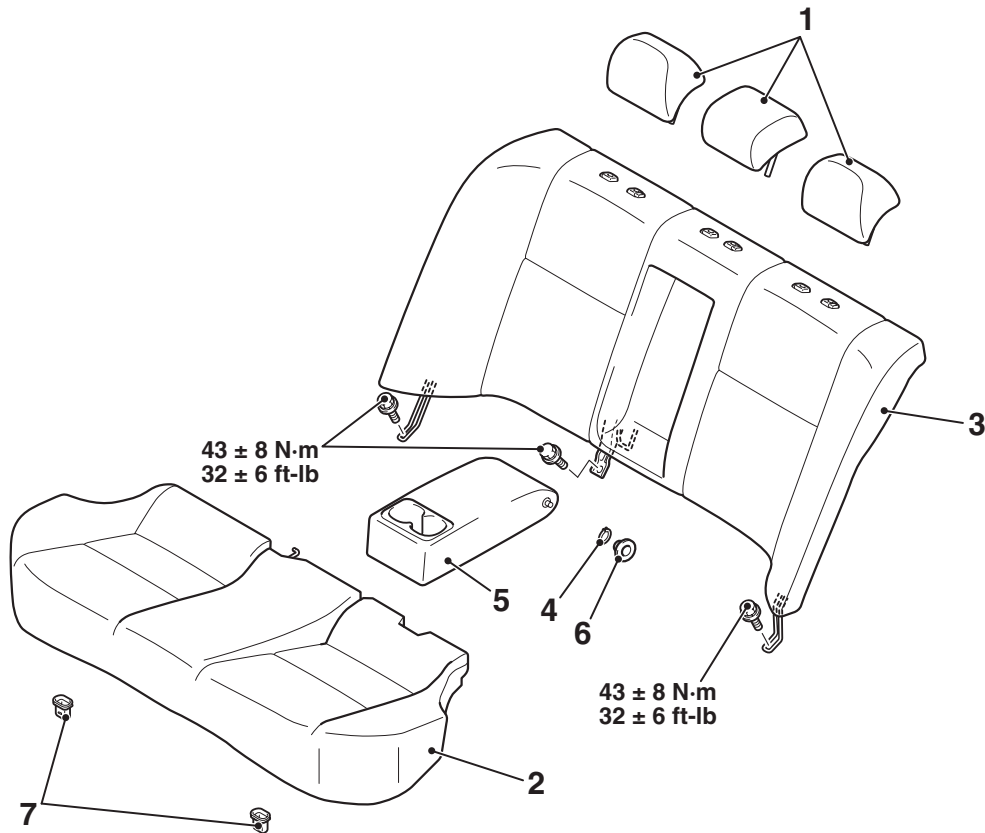
**Disassembly steps (Continued)**

9. Front seatback assembly
10. Headrest garnish
11. Front seatback
12. Slide rail adjuster mounting bolts
13. Front seat cushion
14. Slide adjuster assembly
15. Front seat slide adjuster lever
16. Slide adjuster



**REAR SEAT ASSEMBLY  
REMOVAL AND INSTALLATION**

M1522001800769



AC708403AB

**Removal steps**

- >>B<< 1. Rear seat headrest
- >>A<< 2. Rear seat cushion assembly
- >>A<< 3. Rear seatback assembly
- 4. Snap ring

<<A>>

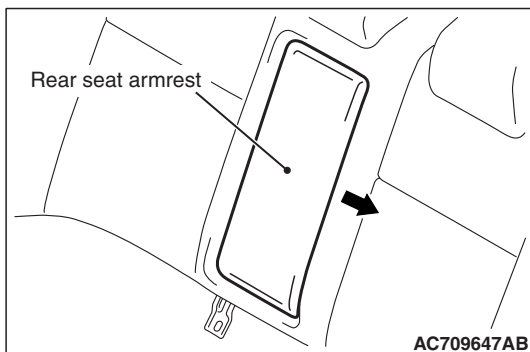
**Removal steps (Continued)**

- 5. Rear seat armrest
- 6. Rear seat bushing
- 7. Rear seat hook

**REMOVAL SERVICE POINT**

**<<A>>REAR SEAT ARMREST REMOVAL**

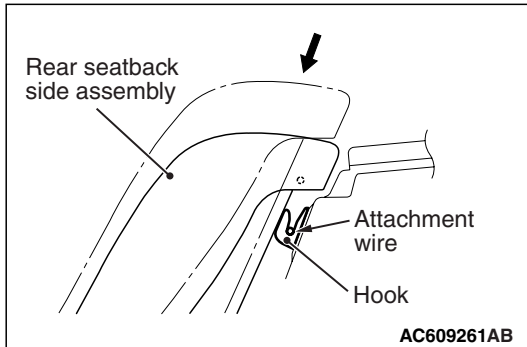
Slide the armrest to the left and remove it from the right side as shown in the figure.



## INSTALLATION SERVICE POINTS

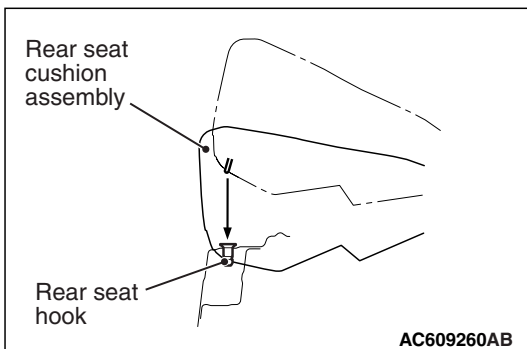
## &gt;&gt;A&lt;&lt; INSTALLATION OF REAR SEATBACK SIDE ASSEMBLY (LH)/REAR SEATBACK SIDE ASSEMBLY (RH)

Press the rear seatback side assembly in the direction shown in the illustration and fit the attachment wire into the hook securely to install the rear seatback side assembly.



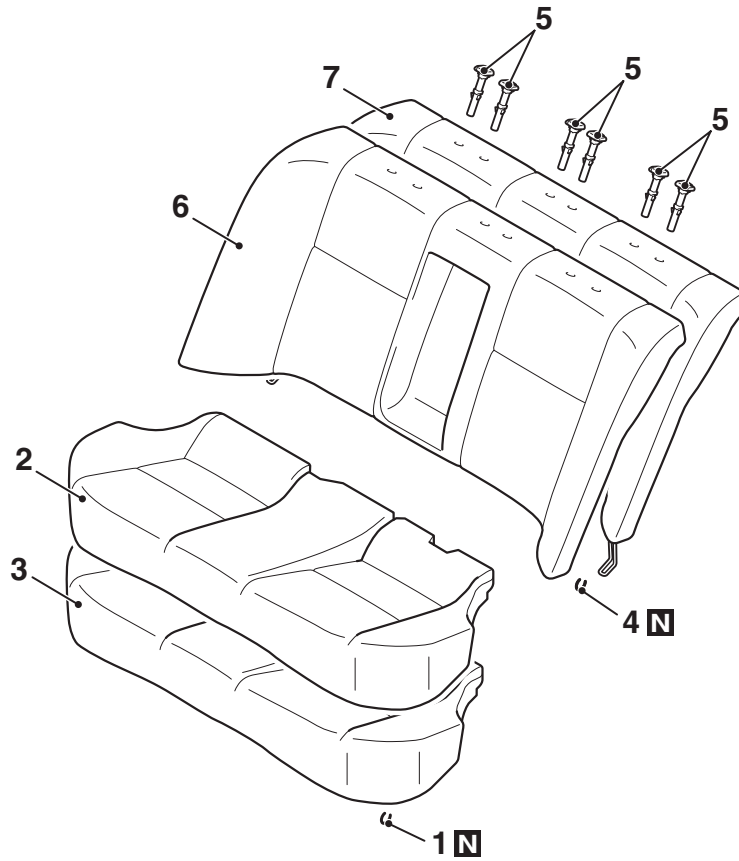
## &gt;&gt;B&lt;&lt; INSTALLATION OF REAR SEAT CUSHION ASSEMBLY

Fit the rear seat cushion into the rear seat hook securely.



DISASSEMBLY AND ASSEMBLY

M1522002000841



**Disassembly steps**

1. Hog ring
2. Rear seat cushion cover
3. Rear seat cushion pad
4. Hog ring

AC708404AB

**Disassembly steps (Continued)**

5. Rear seat head restraint guide
6. Rear seatback cover
7. Rear seatback pad

## SEAT BELT

## FRONT SEAT BELT

## REMOVAL AND INSTALLATION

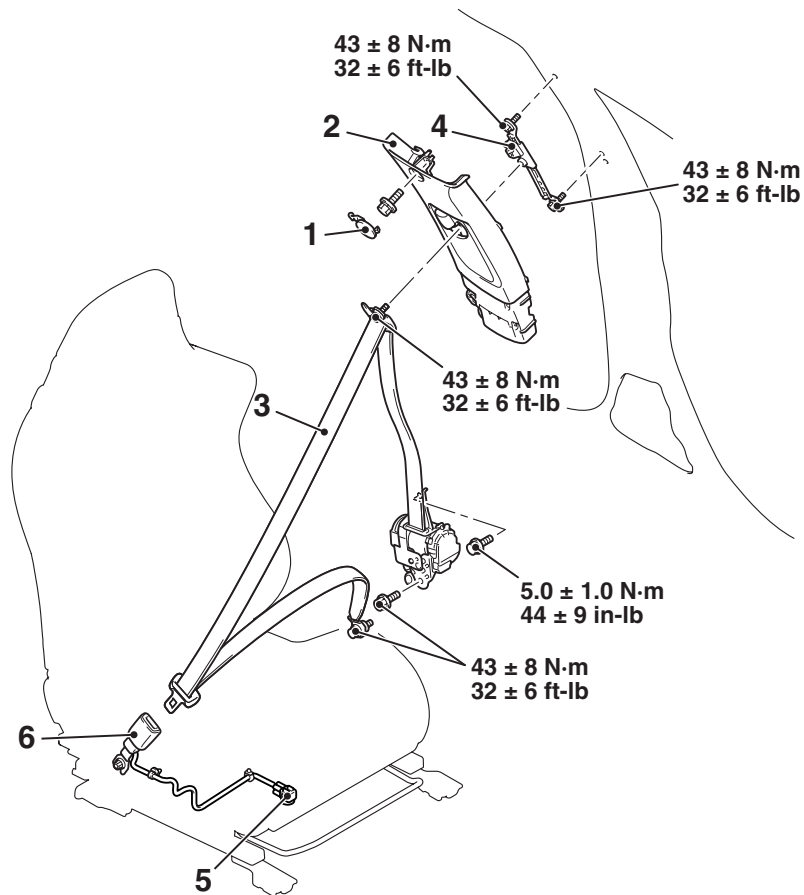
M1523001301072

**CAUTION**

SRS: Before removing and installing the seat belts with pre-tensioner, refer to GROUP 52B –SRS Service Precautions P.52B-25 and Seat Belt with Pre-tensioner P.52B-417.

**Pre-removal and Post-installation Operation**

- Turn the ignition key to the LOOK (OFF) position.
- Disconnect the negative battery terminal.



AC709124AB

&lt;&lt;A&gt;&gt;

**Outer seat belt removal steps**

1. Center pillar trim upper cap
  - Center pillar trim lower (Refer to P.52A-11).
2. Center pillar trim upper (Refer to P.52A-11).
3. Outer seat belt (Refer to GROUP 52B, Seat Belt with Pre-tensioner P.52B-413).
4. Adjustable seat belt anchor

**Inner seat belt removal steps**

5. Harness connector
  - Shield cover (Refer to P.52A-24).
6. Inner seat belt

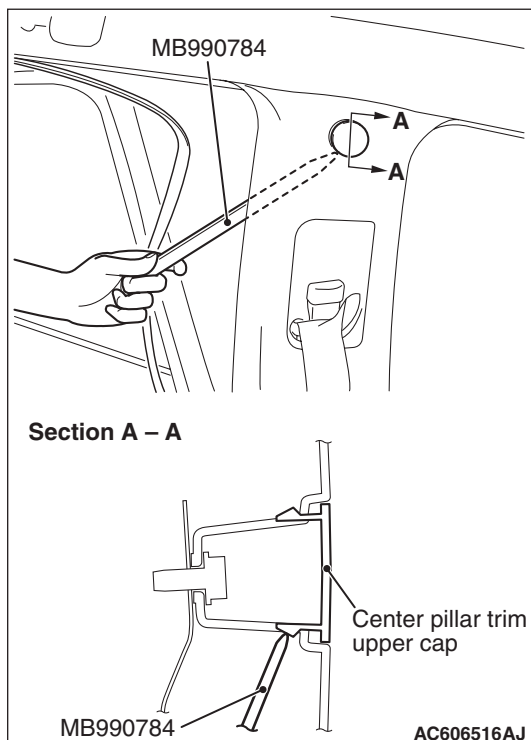
**Required Special Tool:**

- MB990784: Ornament Remover

**REMOVAL SERVICE POINT**

**<<A>> CENTER PILLAR TRIM UPPER CAP  
REMOVAL**

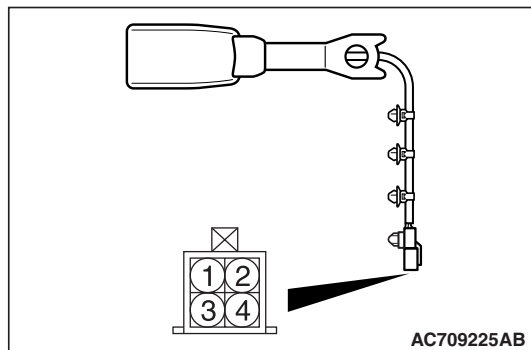
Remove the opening trim. Remove the center pillar trim upper cap by inserting the special tool MB990784 between the center pillar trim upper and body as shown in the illustration.



**INSPECTION**

M1523004400547

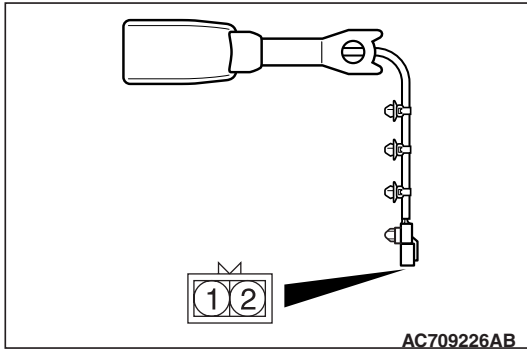
**SEAT BELT BUCKLE SWITCH CONTINUITY  
CHECK (DRIVER'S SIDE)**



Item	Tester connection	Specified condition
Fastened seat belt	1 -2	Open circuit
Unfastened seat belt	1 -2	Continuity exists (2Ω or less)

**SEAT BELT BUCKLE SWITCH CONTINUITY  
CHECK (PASSENGER'S SIDE)**

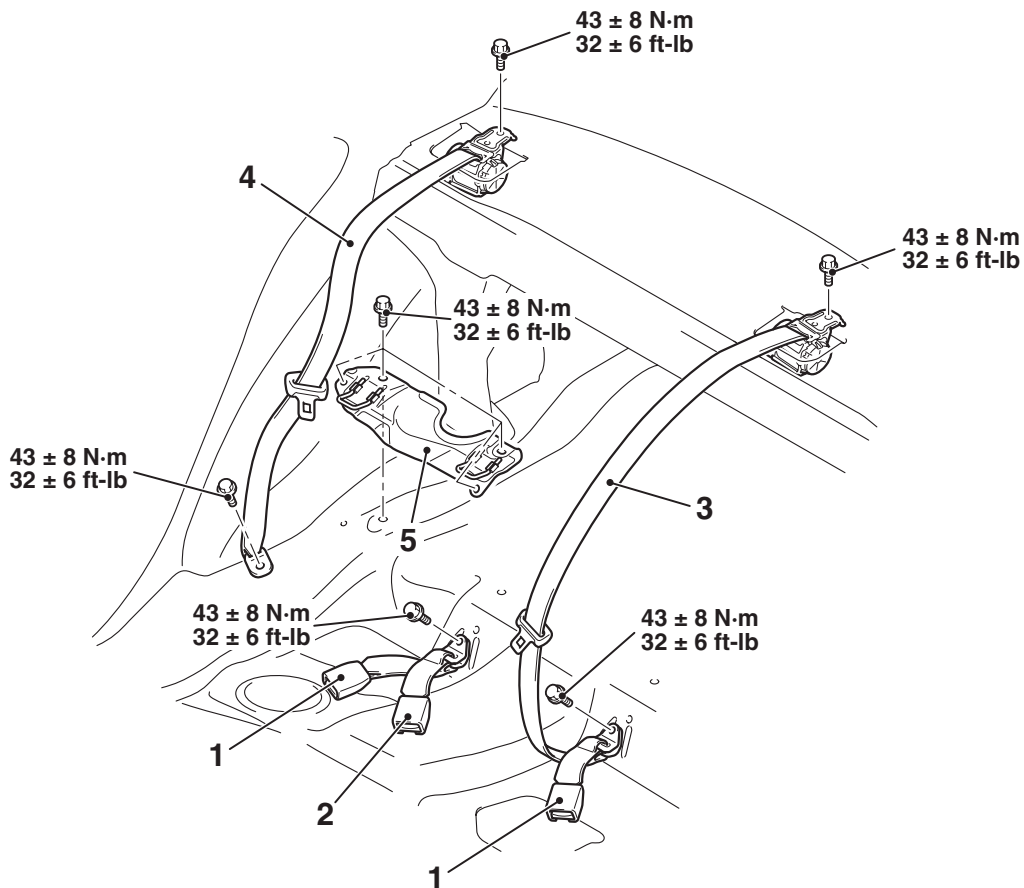
Power supply voltage: 5V



Check condition	Power supply connection	Normal condition
The seatbelt is fastened.	<ul style="list-style-type: none"> <li>Connect terminal No.1 to the negative terminal.</li> <li>Connect terminal No.2 to the positive terminal.</li> </ul>	12 - 17 mA
The seatbelt is not fastened.		4 - 7 mA

**REAR SEAT BELT  
REMOVAL AND INSTALLATION**

M1523001600810



AC609742AB

**Removal steps**

- Rear seat cushion assembly (Refer to [P.52A-25](#)).
- Rear seatback assembly (Refer to [P.52A-25](#)).
- Rear shelf trim (Refer to [P.52A-11](#)).

**Removal steps (Continued)**

1. Inner seat belt
2. Center seat belt, inner
3. Center seat belt, outer
4. Outer seat belt
5. Lower child anchor bracket