

GROUP 22D

TWIN CLUTCH SST OVERHAUL

CONTENTS

GENERAL DESCRIPTION.....	22D-2	LUBRICANT	22D-3
GENERAL SPECIFICATION	22D-2	TRANSAXLE.....	22D-3
		DISASSEMBLY AND ASSEMBLY	22D-3
FASTENER TIGHTENING SPECIFICATION	22D-2	TRANSFER.....	22D-4
		DISASSEMBLY AND ASSEMBLY	22D-4

GENERAL DESCRIPTION

M1226000100025

TRANSAXLE MODEL

Transaxle model	Engine model	Vehicle model
W6DGA-1-11AA	4B11	CZ4A

GENERAL SPECIFICATION

M1226000200022

GEAR RATIO TABLE

Item	Specification	
Transaxle model	W6DGA	
Transaxle type	6-speed forward, 1-speed reverse constant mesh	
Transaxle gear ratio	1st	3.655
	2nd	2.368
	3rd	1.754
	4th	1.322
	5th	1.008
	6th	0.775
	Reverse	4.011
Final gear ratio	4.062	
Transfer gear ratio	0.302	

FASTENER TIGHTENING SPECIFICATION

M1226000700027

TRANSAXLE

Item	Specification
Control cable bracket	21 ± 3 N· m (15 ± 2 ft-lb)
Harness bracket	25 ± 4 N· m (18 ± 2 ft-lb)
Front cover	9.0 N· m (79 in-lb)
Oil filter bracket	9.0 N· m (79 in-lb)
Transfer mounting bolt	69 ± 9 N· m (51 ± 6 ft-lb)

TRANSFER

Item	Specification
Transfer heat protector	10 ± 2 N· m (88 ± 17 in-lb)
Drive shaft heat protector	9.0 ± 1.0 N· m (79 ± 8 in-lb)

LUBRICANT

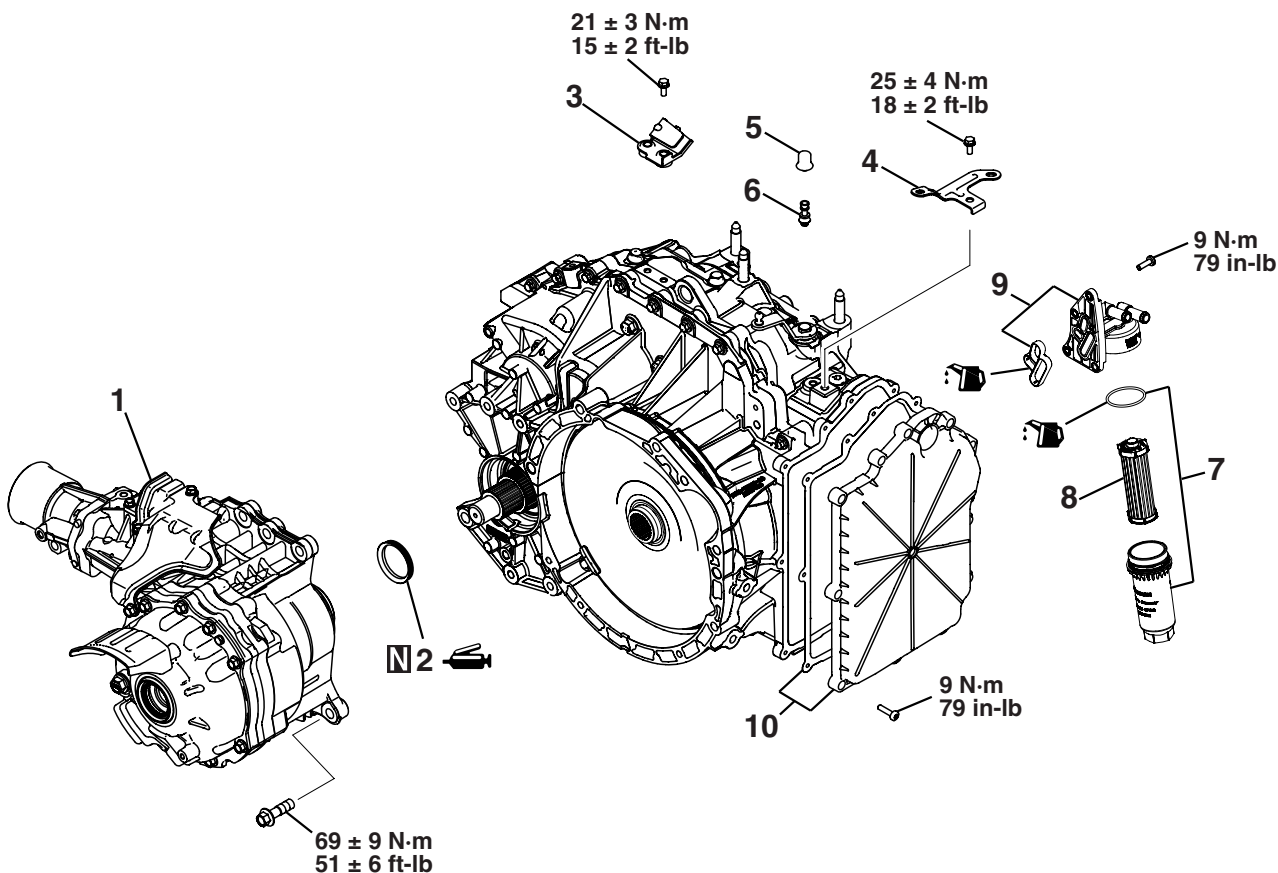
M1226000400026

Item	Specified sealant
Oil filter bracket gasket	Mitsubishi genuine part Diaqueen SSTF-1
Oil filter case O-ring	
V-ring	Molykote BR-2 plus

TRANSAXLE

DISASSEMBLY AND ASSEMBLY

M1226001000021



AK702672AD

Removal steps

1. Transfer assembly
2. V-ring
3. Control cable bracket
4. Harness bracket
5. Breather cap
6. Air breather
7. Oil filter case assembly
8. Oil filter

Removal steps (Continued)

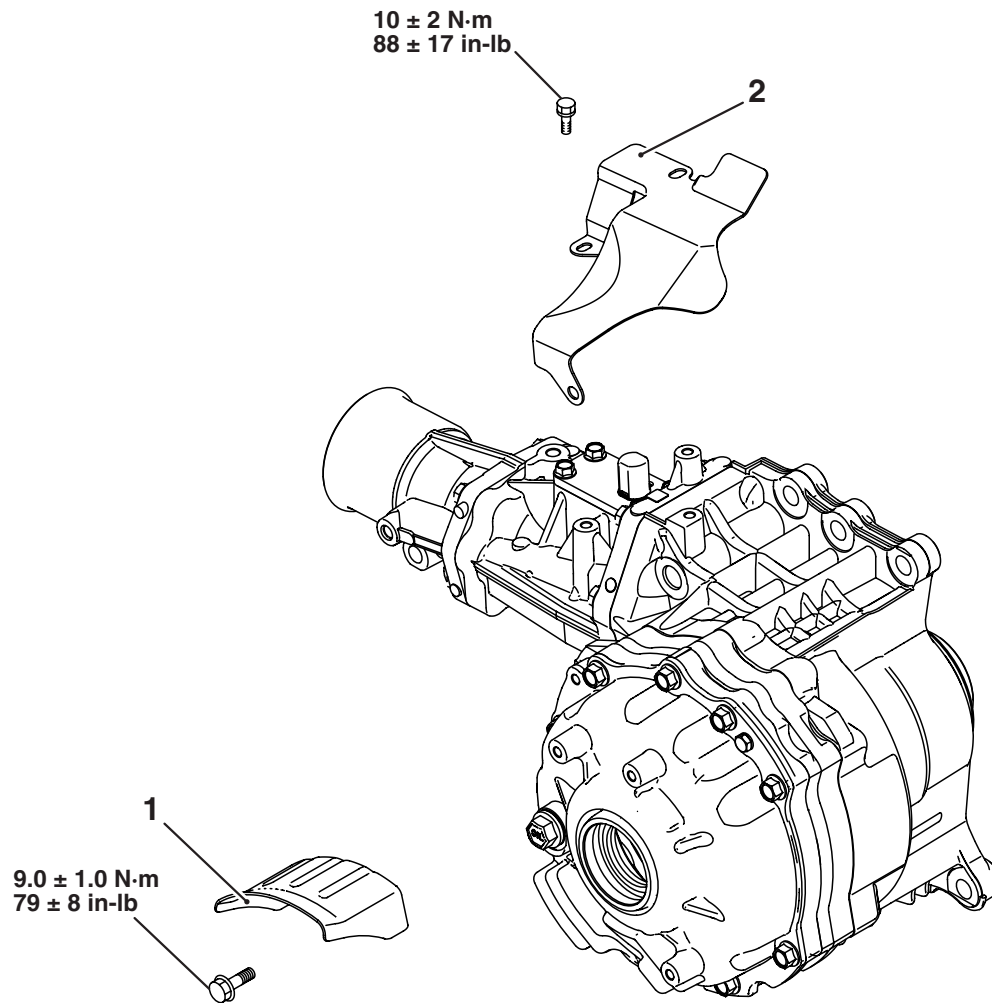
9. Oil filter bracket assembly
10. Front cover assembly

CAUTION

Only if damaged, the oil filter case assembly, the oil filter bracket assembly and the front cover assembly are replaced.

TRANSFER**DISASSEMBLY AND ASSEMBLY**

M1226004000020



AK703407AC

Removal steps

1. Drive shaft heat protector
2. Transfer heat protector