
GROUP 16

**ENGINE
ELECTRICAL**

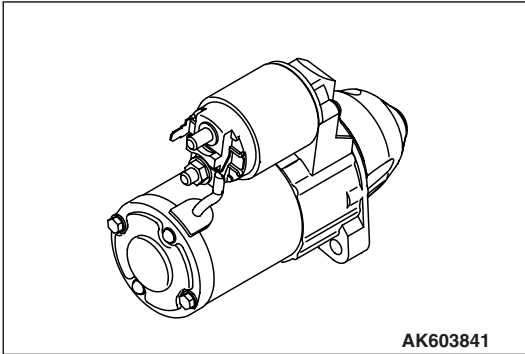
CONTENTS

STARTER MOTOR	16-2	IGNITION COIL.....	16-4
ALTERNATOR.....	16-3	SPARK PLUG.....	16-4

STARTER MOTOR

M2161002000416

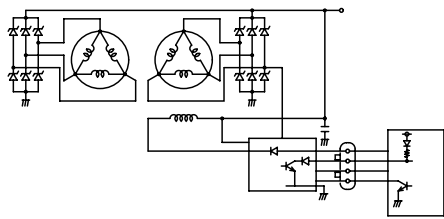
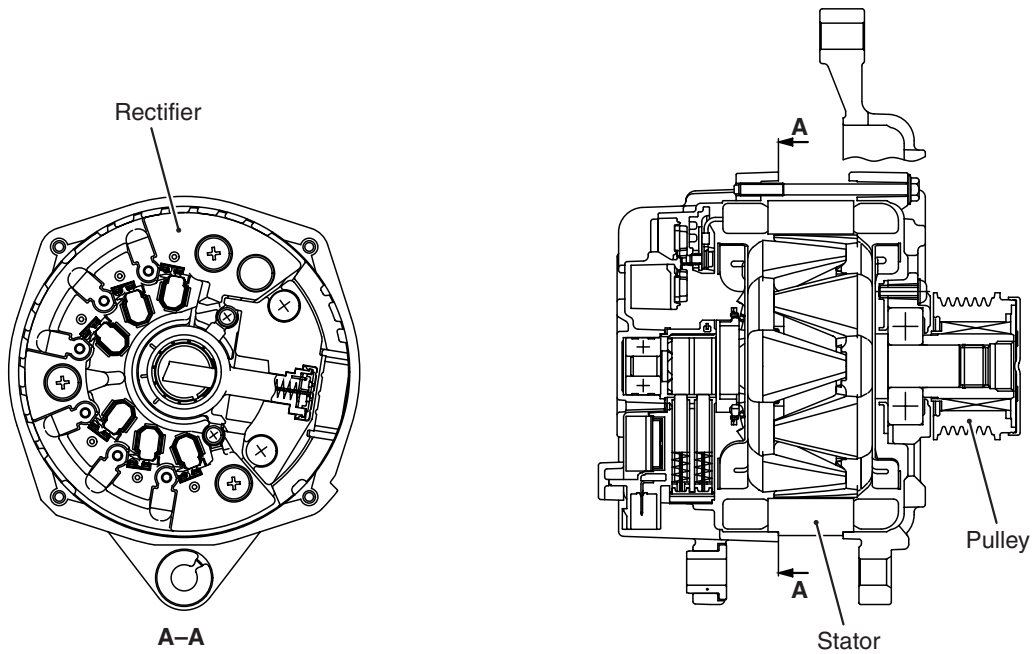
The starter motor is a reduction drive planetary gear type.



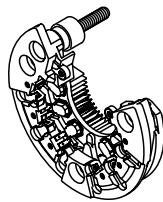
AK603841

ALTERNATOR

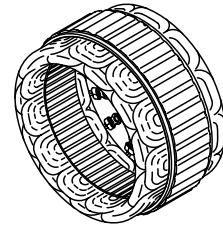
M2162001000342



Circuit diagram



Rectifier



Stator



Pulley

AK703273AC

The new generation alternator is used to reach the high output and the high efficiency, also to reduce the noise.

The major characteristics are as follows:

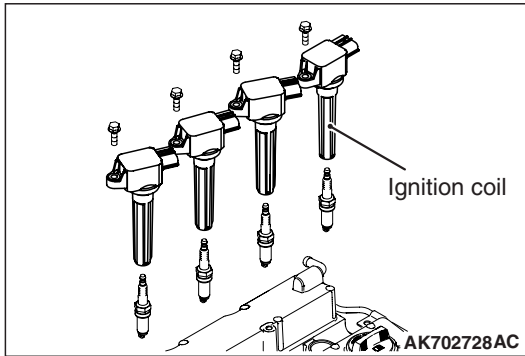
- Circuit structure for new generation.
Reduction in magnetic noise and ripple.
- Higher performance of stator.
Higher output and higher efficiency.
- New generation of rectifier:
Improves the coolability by the larger heat sink and accepts the higher output.

The pulley with one-way clutch is used.

IGNITION COIL

M2163001000390

The ignition coil is a plug-top type.



SPARK PLUG

M2163005000295

Iridium-tipped spark plugs are used.

