

---

**GROUP 80B****SPLICE LOCATIONS****CONTENTS**

HOW TO READ SPLICE LOCATIONS.....	<b>80B-2</b>	DASH PANEL.....	<b>80B-5</b>
INDEX.....	<b>80B-3</b>	STEERING COLUMN.....	<b>80B-5</b>
ENGINE COMPARTMENT.....	<b>80B-4</b>	FLOOR AND ROOF.....	<b>80B-6</b>
ENGINE AND TRANSAXLE.....	<b>80B-4</b>	LUGGAGE COMPARTMENT.....	<b>80B-6</b>

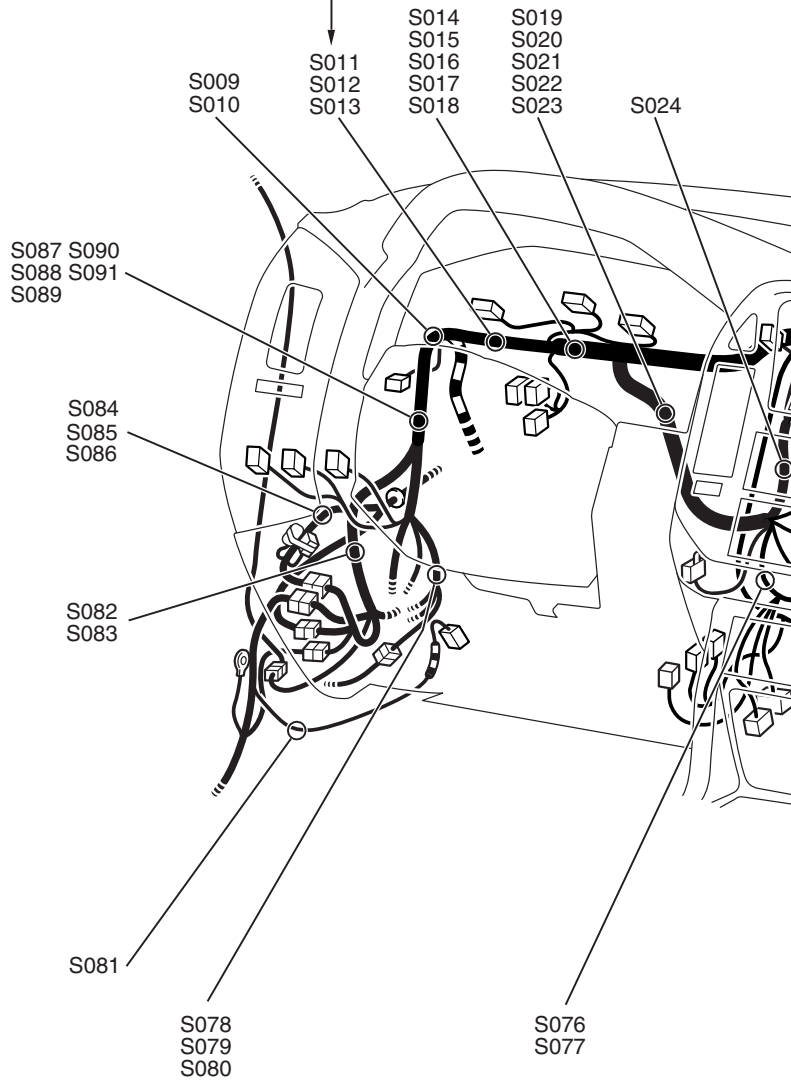
# HOW TO READ SPLICE LOCATIONS

"Splice locations" describes splice points of each wiring harness on an actual vehicle. Some variations are included in one splice location. Accordingly, some locations may not be applicable for individual vehicles.

Indicates a splice point number.  
The splice point numbers are identical to those in "CIRCUIT DIAGRAMS," making them easy to use.  
In addition, the splice point numbers are usually numbered clockwise.

Example: S 013

- Sequential number
- Prefix meaning splice point



## INDEX

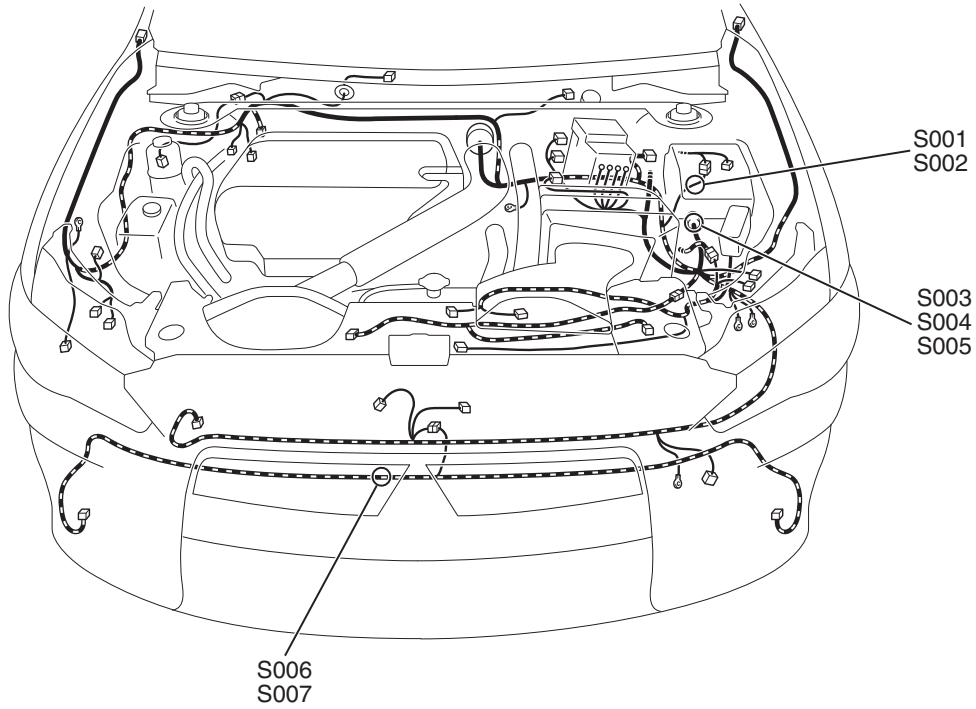
M1802000901497

This index shows the page numbers where the splice locations are.

<b>SPLICE LOCATION NO.</b>	<b>PAGE</b>	<b>SPLICE LOCATION NO.</b>	<b>PAGE</b>	<b>SPLICE LOCATION NO.</b>	<b>PAGE</b>	<b>SPLICE LOCATION NO.</b>	<b>PAGE</b>
S001	P.80B-4	S002	P.80B-4	S003	P.80B-4	S004	P.80B-4
S005	P.80B-4	S006	P.80B-4	S007	P.80B-4	S008	P.80B-4
S009	P.80B-4	S010	P.80B-4	S011	P.80B-4	S012	P.80B-4
S013	P.80B-4	S014	P.80B-5	S015	P.80B-5	S016	P.80B-5
S017	P.80B-5	S018	P.80B-5	S019	P.80B-5	S020	P.80B-5
S021	P.80B-5	S022	P.80B-5	S023	P.80B-5	S024	P.80B-5
S025	P.80B-5	S026	P.80B-5	S027	P.80B-5	S028	P.80B-5
S031	P.80B-5	S032	P.80B-5	S034	P.80B-5	S035	P.80B-5
S036	P.80B-5	S037	P.80B-5	S038	P.80B-5	S039	P.80B-5
S040	P.80B-5	S041	P.80B-5	S043	P.80B-5	S044	P.80B-5
S045	P.80B-5	S046	P.80B-5	S047	P.80B-5	S048	P.80B-5
S049	P.80B-5	S050	P.80B-5	S051	P.80B-5	S052	P.80B-5
S053	P.80B-6	S054	P.80B-6	S055	P.80B-6	S056	P.80B-6
S058	P.80B-6	S059	P.80B-6	S060	P.80B-6	S061	P.80B-6
S062	P.80B-6	S063	P.80B-6	S064	P.80B-5	S065	P.80B-6
S066	P.80B-5						

# ENGINE COMPARTMENT

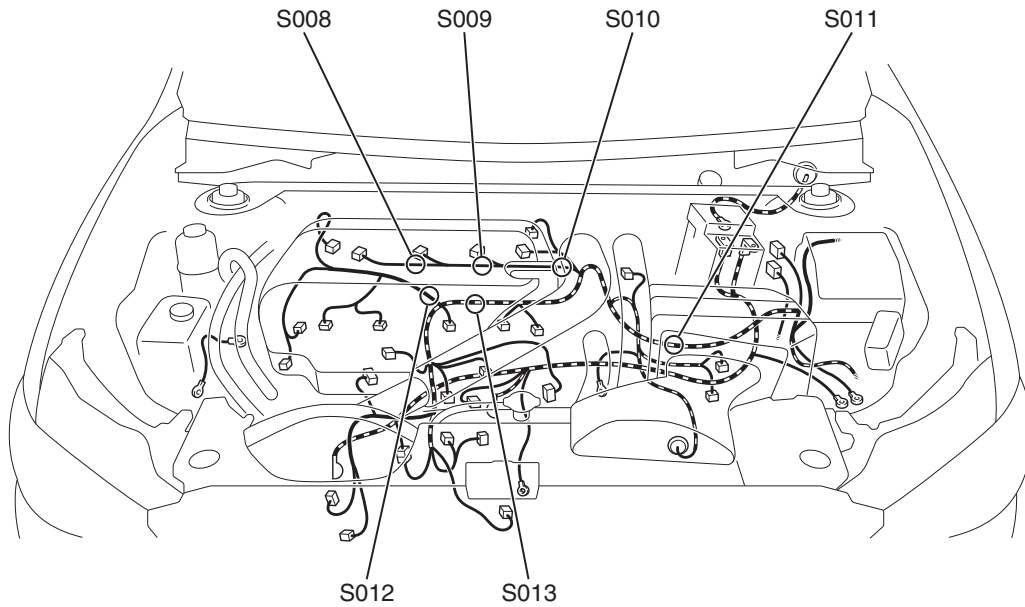
M1802000201090



AC901354AB

# ENGINE AND TRANSAXLE

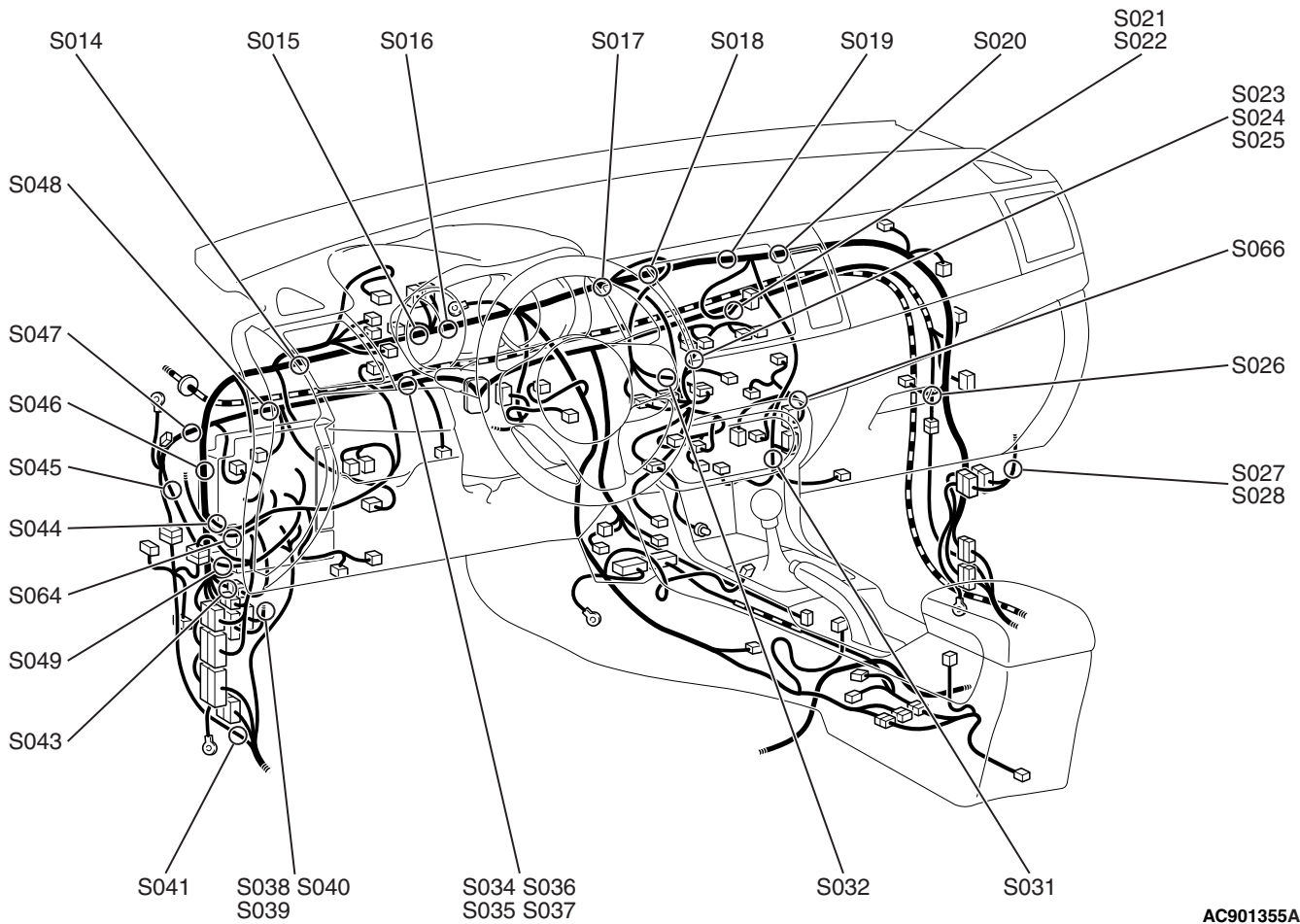
M1802001401127



AC902454AB

# DASH PANEL

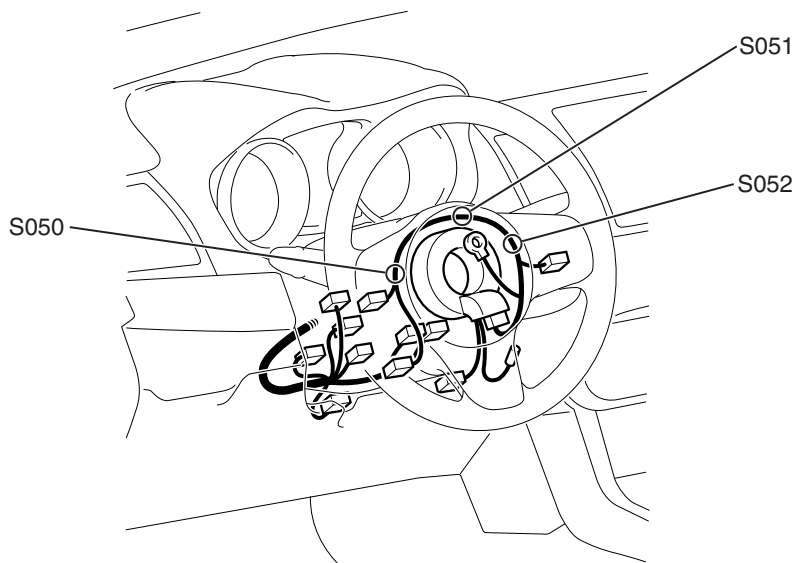
M1802000301310



AC901355AB

# STEERING COLUMN

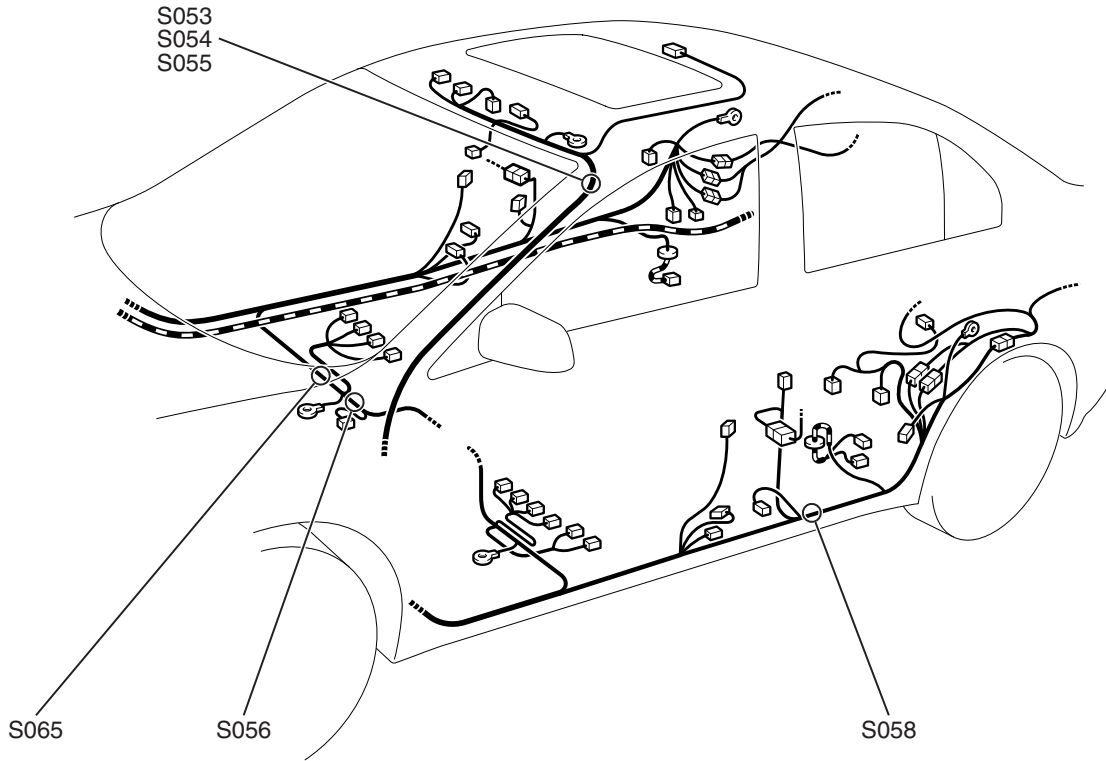
M1802000400240



AC708226AC

**FLOOR AND ROOF**

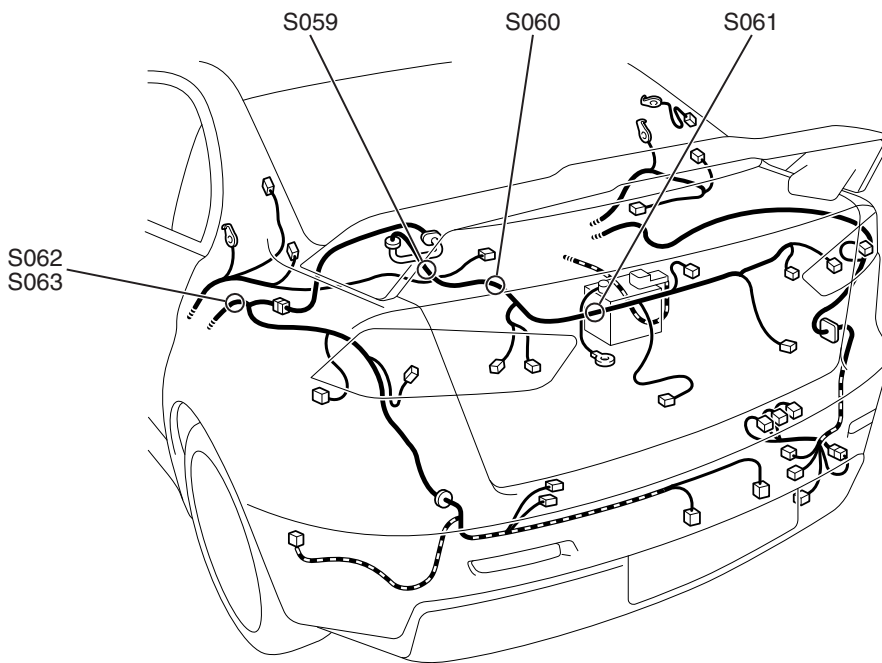
M1802001201060



AC805694AC

**LUGGAGE COMPARTMENT**

M1802000700296



AC708485AB