
GROUP 5

**SYNTHETIC-RESIN
PARTS**

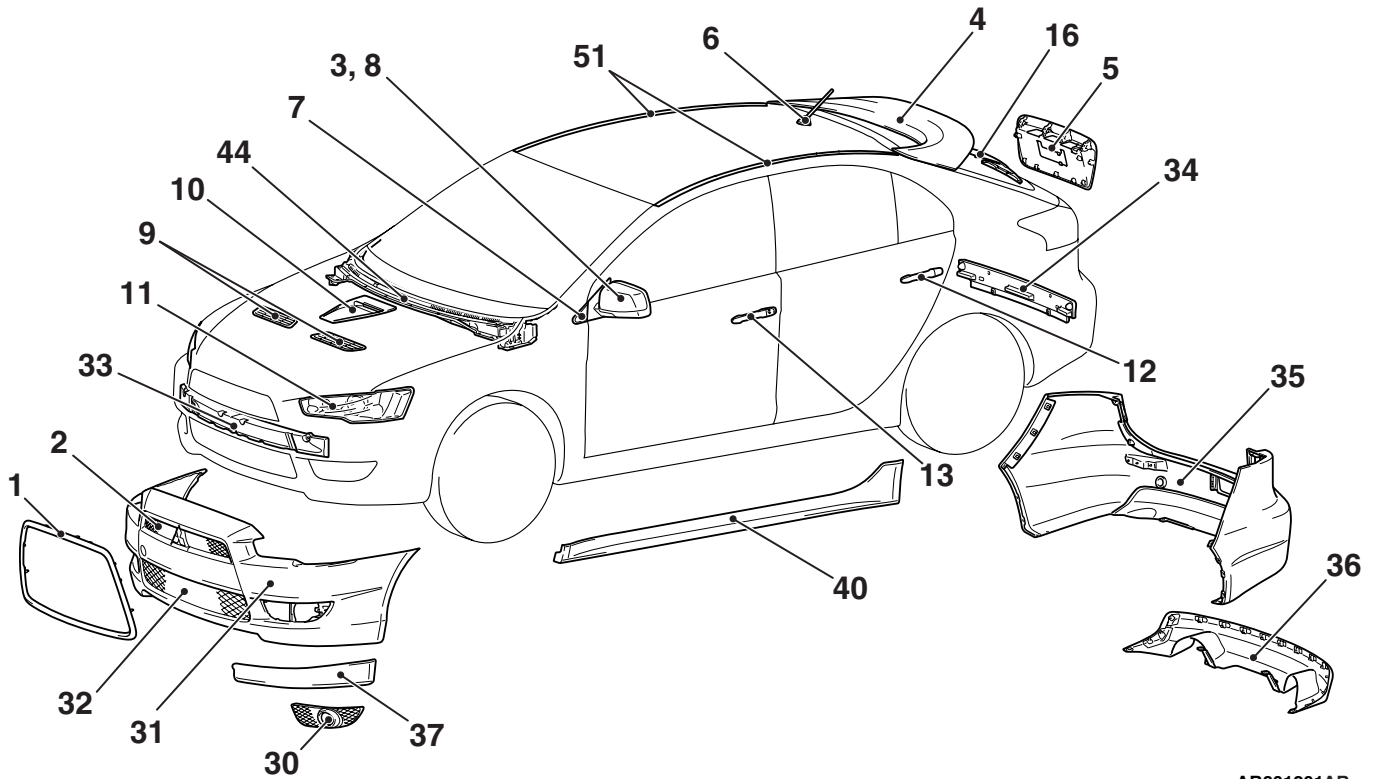
CONTENTS

| | |
|--|------------|
| LOCATION OF SYNTHETIC-RESIN PARTS | 5-2 |
|--|------------|

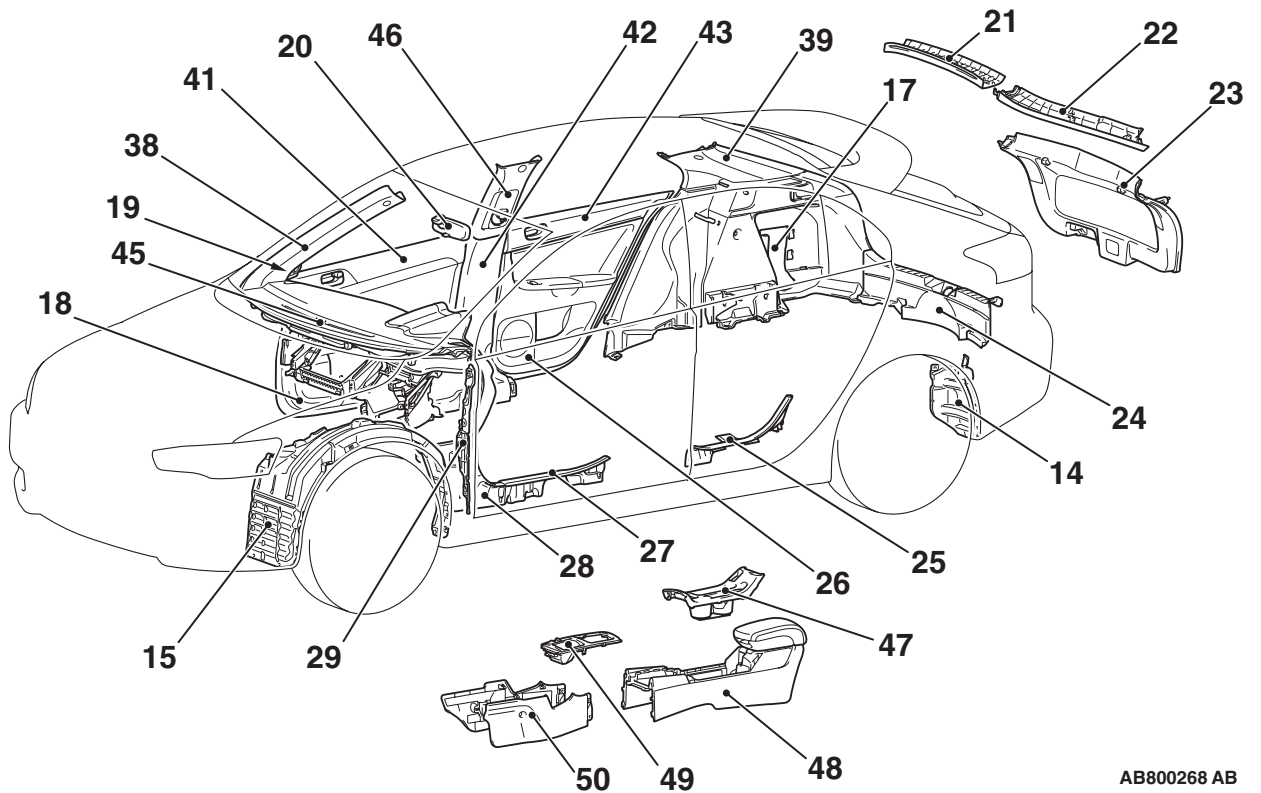
LOCATION OF SYNTHETIC-RESIN PARTS

M4050001001819

The location and material of each of the principal synthetic-resin parts are shown below.



AB801201AB



AB800268 AB

**SYNTHETIC-RESIN PARTS
LOCATION OF SYNTHETIC-RESIN PARTS**

| No. | Part Name | Name Of Resin | Abbreviation | Heat-resistant Temp [° C (° F)] |
|-----|--|--|--------------|---------------------------------|
| 1 | Front bumper center garnish <RALLIART> | Acrylonitrile butadiene styrene | ABS | 80 (176) |
| 2 | Radiator grille | | | |
| 3 | Door mirror outer cover (color) | | | |
| 4 | Liftgate spoiler | | | |
| 5 | Liftgate garnish | | | |
| 6 | Antenna base | Acrylonitrile ethylene styrene | AES | 80 (176) |
| 7 | Front delta garnish | Acrylonitrile styrene acrylate | ASA (AAS) | 80 (176) |
| 8 | Door mirror outer cover (black) | | | |
| 9 | Hood air outlet garnish <RALLIART> | Talc (35%) filled Polyamide 6 | PA6-TD35 | 80 (176) |
| 10 | Hood air inlet garnish <RALLIART> | | | |
| 11 | Headlight | Polycarbonate | PC | 120 (248) |
| 12 | Rear door outside handle | Polycarbonate+Polyethylene terephthalate | PC+PET | 120 (248) |
| 13 | Front door outside handle | | | |
| 14 | Rear wheelhouse splash shield | High density polyethylene | PE-HD (HDPE) | 70 –90 (158 –194) |
| 15 | Front splash shield | | | |
| 16 | Rear wiper arm | Polyethylene terephthalate-Glass fiber (45%) | PET-GF45 | 90 (194) |
| 17 | Quarter trim | Polyethylene terephthalate+Polypropylene | PET+PP | 90 (194) |
| 18 | Front door trim lower | Polypropylene | PP | 80 (176) |
| 19 | Front door sash trim | | | |
| 20 | Inside rear view mirror | | | |
| 21 | Liftgate trim upper | | | |
| 22 | Liftgate trim upper (RH/LH) | | | |
| 23 | Liftgate lower trim | | | |
| 24 | Trunk room rear end trim | | | |
| 25 | Rear scuff plate | | | |
| 26 | Rear door trim lower | | | |
| 27 | Front scuff plate | | | |
| 28 | Cowl side trim | | | |
| 29 | Fender protector rear | | | |

**SYNTHETIC-RESIN PARTS
LOCATION OF SYNTHETIC-RESIN PARTS**

| No. | Part Name | Name Of Resin | Abbreviation | Heat-resistant Temp [° C (° F)] |
|-----|---------------------------------------|---|---------------|---------------------------------|
| 30 | Front fog light bezel | Rubber denatured polypropylene | PP+E/P | 80 (176) |
| 31 | Front bumper face | | | |
| 32 | Front bumper grille | | | |
| 33 | Front bumper core | | | |
| 34 | Rear bumper core | | | |
| 35 | Rear bumper face | | | |
| 36 | Rear bumper extension <RALLIART> | | | |
| 37 | Air dam skirt panel <Except RALLIART> | | | |
| 38 | Front pillar trim | Talc filled rubber modified polypropylene (15%) | PP+E/P-T D15 | 110 (230) |
| 39 | Rear pillar trim | | | |
| 40 | Side air dam | Talc filled rubber modified polypropylene (20%) | PP+E/P-T D20 | 110 (230) |
| 41 | Front door trim upper | Talc filled polypropylene (10%) | PP-TD10 (PPF) | 110 –120 (230 –248) |
| 42 | Lower center pillar trim | | | |
| 43 | Rear door trim upper | | | |
| 44 | Front deck garnish | Talc filled polypropylene (20%) | PP-TD20 (PPF) | 120 –130 (248 –266) |
| 45 | Instrument panel | | | |
| 46 | Upper center pillar trim | | | |
| 47 | Floor console box cup holder | | | |
| 48 | Floor console | | | |
| 49 | Floor console panel | | | |
| 50 | Floor console side cover | | | |
| 51 | Roof drip molding | Polyvinyl chloride | PVC | 80 (176) |

NOTE:

- If the material symbols designated by the ISO differ from the old symbols, both are given, with the old symboling enclosed in brackets.
ISO: International Standardization Organization.
- A slash (/) in the material symbol indicates that two different materials make two-layer construction. A plus sign (+) indicates that the two different materials mix each other.
- The indicated heat-resistant temperature for parts which are composed of two or more types of material is the value for the material with the lowest heat-resistant temperature.
- The material symbols for synthetic-resin parts are embossed on the parts in hidden places.