
GROUP 12

**ENGINE
LUBRICATION**

CONTENTS

GENERAL DESCRIPTION.....	12-2	OIL PAN	12-4
OIL PASSAGE.....	12-2	OIL PUMP <2.0L ENGINE>	12-5
OIL FILTER	12-4		

GENERAL DESCRIPTION

M2120000100346

The lubrication system is a full-flow, filter pumping system.

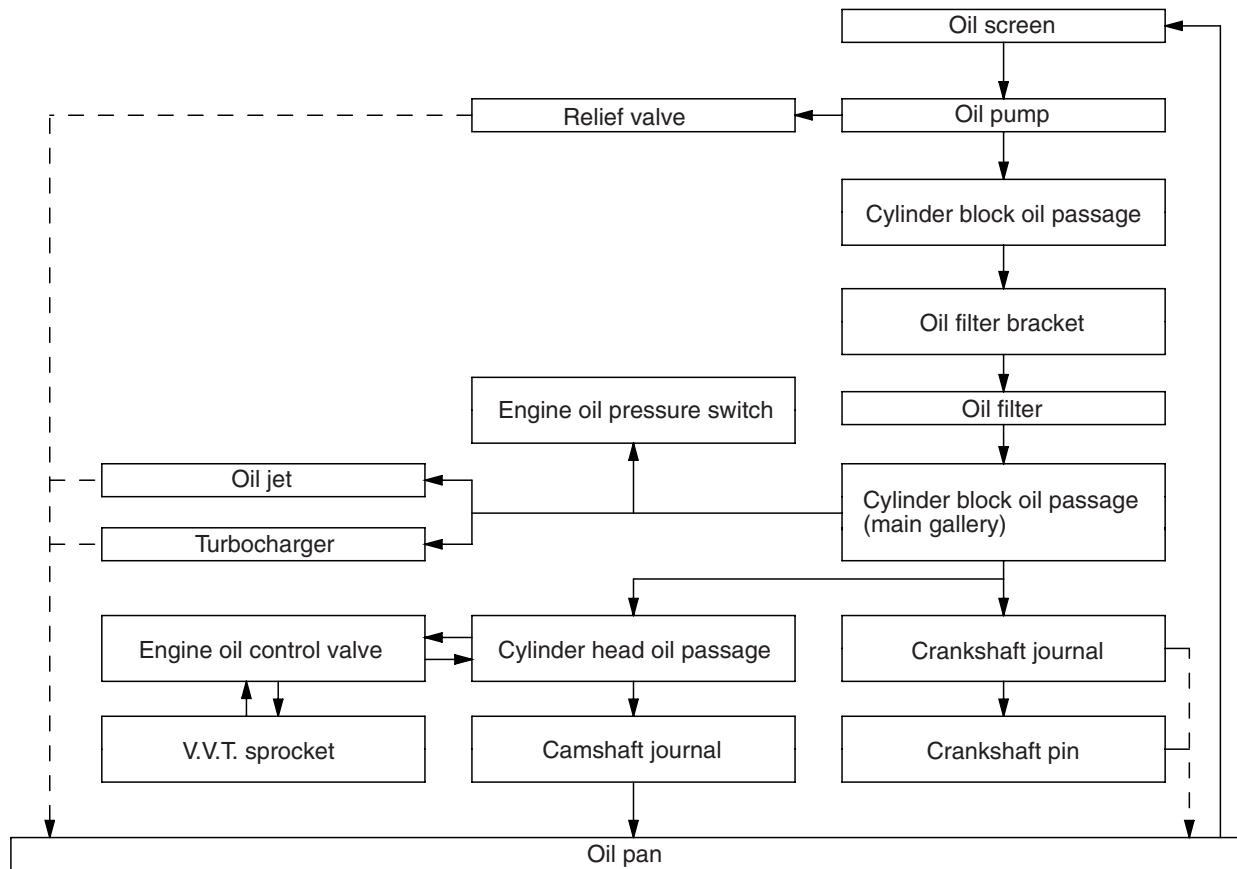
The engine oil that accumulates in the oil pan is drawn and discharged by the oil pump. After its pressure is regulated by the relief valve, the oil passes through the oil filter. Then, it flows from the oil passage in the cylinder block to the individual crankshaft journals and the cylinder head.

After the oil is pumped to the individual crankshaft journals, it passes through a passage in the crankshaft and is fed to the pins. After the oil is pumped to the cylinder head, it flows to the camshaft journals and the engine oil control valves.

OIL PASSAGE

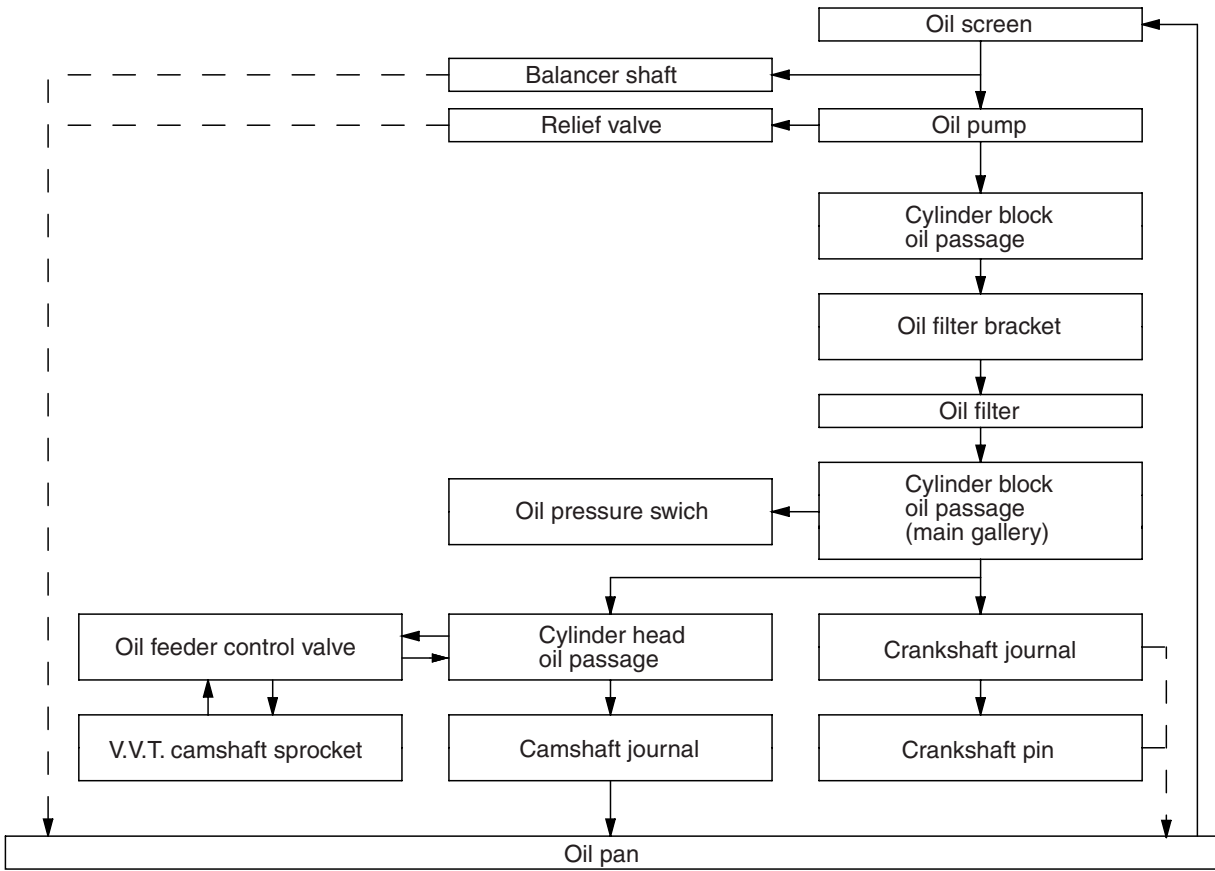
M2120000200622

<2.0L ENGINE>



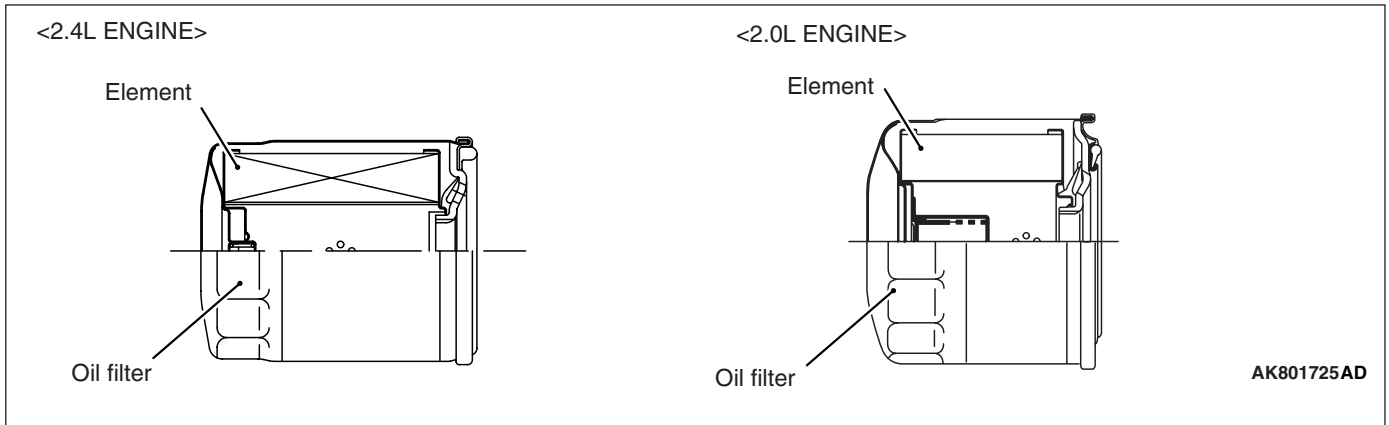
AK703250AC

<2.4L ENGINE>



OIL FILTER

M2120005000496

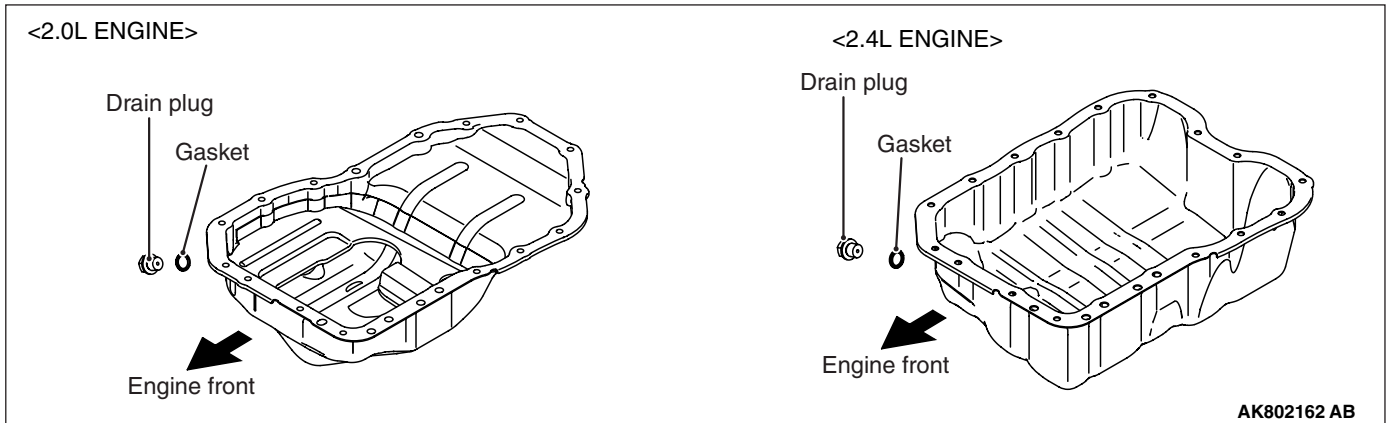


The oil filter is installed to the bracket placed at the left side of ladder frame.

Item	2.0L ENGINE	2.4L ENGINE
Filtering system	Full-flow filtering, filter paper type	Full-flow filtering, filter paper type
Filtering area m ² (in ²)	0.087 (135)	0.11 (170)
Rated flow volume L/min dm ³ (qt)	30 (32)	30 (32)

OIL PAN

M2120006000507

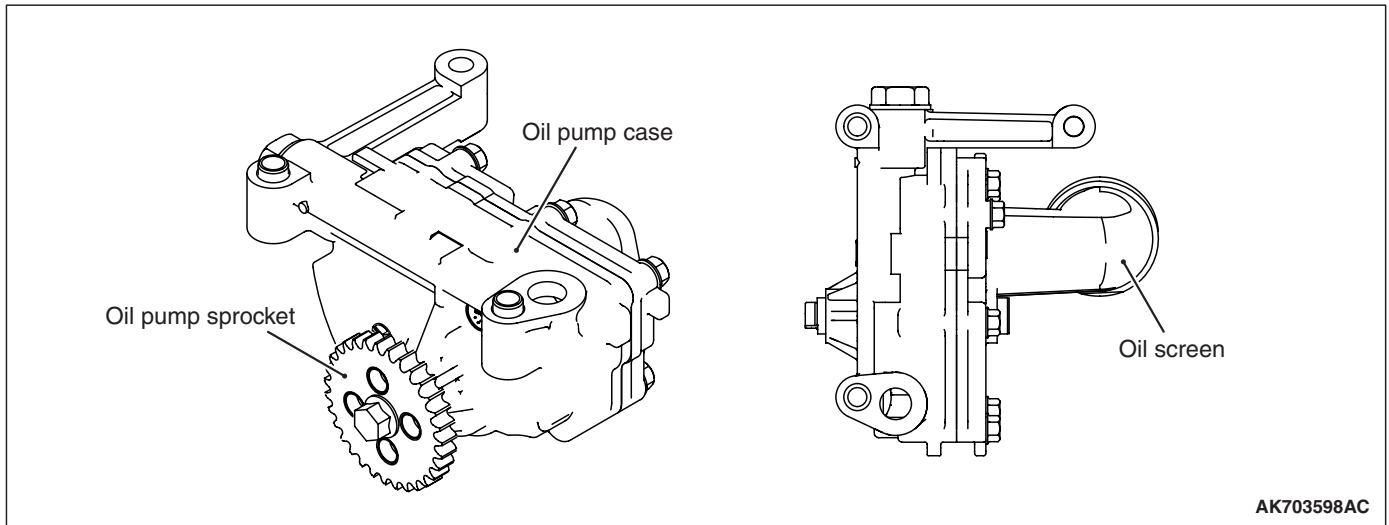


The oil pan is made of high damping sheet metal and contains an oil sump in the forward area of the engine.

FIPG (Formed-In-Place Gasket) is used to seal between the oil pan and the ladder frame.

OIL PUMP <2.0L ENGINE>

M2120002000293



The oil screen is integrated into the oil pump case to be compact and lightweight.

The oil pump case, which is installed to the bottom of the ladder frame, is driven by the oil pump chain through the oil pump sprocket installed to the front of the oil pump case.

NOTES