
GROUP 16

**ENGINE
ELECTRICAL**

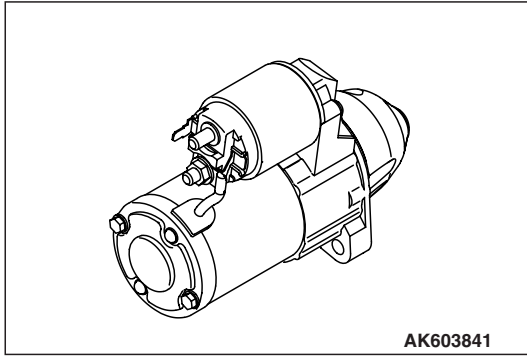
CONTENTS

STARTER MOTOR	16-2	IGNITION COIL.....	16-4
ALTERNATOR.....	16-2	SPARK PLUG.....	16-4

STARTER MOTOR

M2161002000416

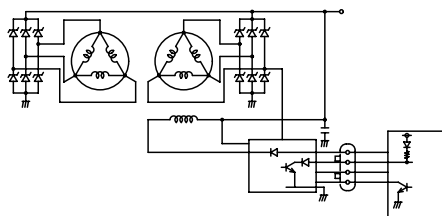
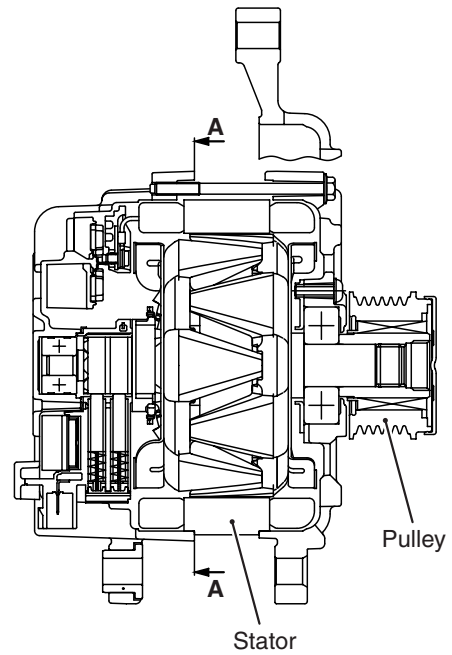
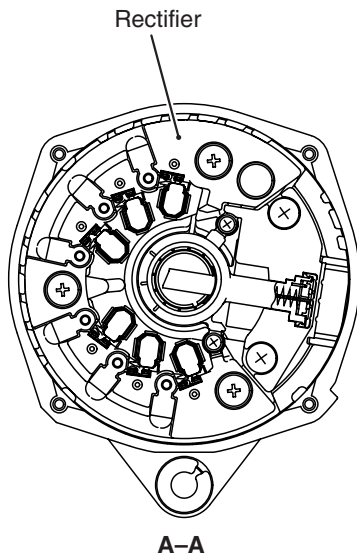
The starter motor is a reduction drive planetary gear type.



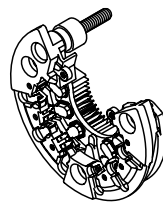
ALTERNATOR

M2162001000579

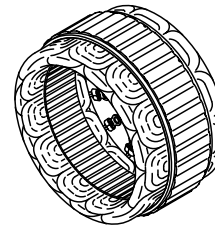
<2.0L ENGINE>



Circuit diagram



Rectifier



Stator



Pulley

The new generation alternator is used to reach the high output and the high efficiency, also to reduce the noise.

The major characteristics are as follows:

- Circuit structure for new generation.
Reduction in magnetic noise and nipple.
- Higher performance of stator.

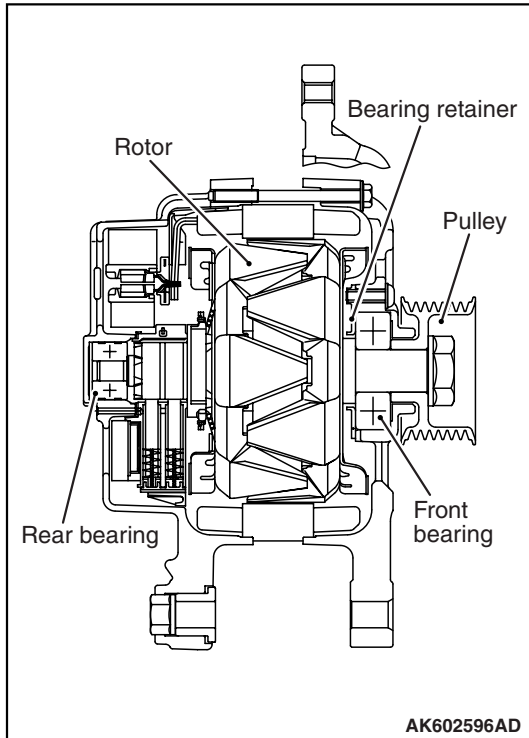
Higher output and higher efficiency.

- New generation of rectifier:
Improves the coolability by the larger heat sink and accepts the higher output.

The pulley with one-way clutch is used.

<2.4L ENGINE>

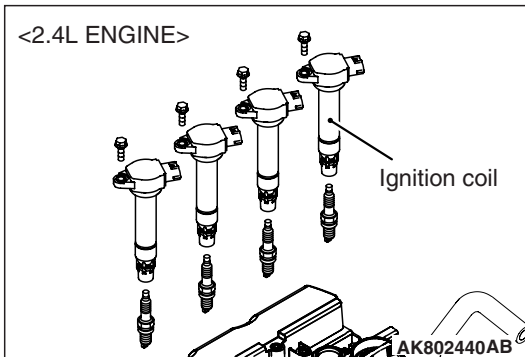
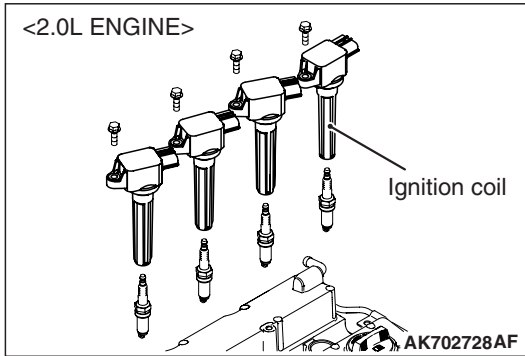
The alternator is the battery detection type.
It uses a pulley with a one-way clutch.



IGNITION COIL

M2163001000538

The ignition coil is a plug-top type.



SPARK PLUG

Iridium-tipped spark plugs are used.

M2163005000295

